



GEMS

Autism & ADHD Support Service
East Berkshire

Virtual Coffee Morning - Sensory needs (AUDHD)

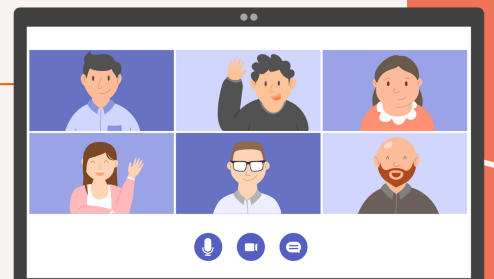
Friday 10th May 10 - 11:15am

Join our online informal discussion to
cover the following areas:

**25 spaces
available!**

- What works for your family?
- What are the sensory difficulties that are being experienced?
- How do you identify and support your child's sensory needs?

Please note this is not a workshop but support group for parent/carers and any medical advice should be sought from your medical practitioner.



Sign Up Today!

Available for families who reside in or have a registered GP in East Berkshire with a child who is Autistic/ADHD (suspected/pathway/diagnosed)

To book your place contact GEMS:



Gems.4Health@nhs.net



0800 999 1342