

Hello!

We hope you are well. This month we have put together a round up of a variety of things we think might be interesting including:

- Details of RBWM's Christmas FUEL program over the Christmas holidays.
- Details of new Family Hub Website
- Parents' Share events for the academic year
- Workshops and groups for young people from GEMS

If you haven't had the chance to meet us at a Parents' Share morning - do come along - you will be most welcome.

With best wishes,

Jean, Chris Donna & Millie

Meet the team



Jean Hobson
Service Manager



Chris Doyle
Adviser



Donna Hembury
Adviser



Millie Rust-Clarke
Business Support

Parents' Share Programme for 2022/23

Parent's Share Programme of Events 2022 / 2023

Date & Time	Event	Venue
Thursday 17 th Nov 0930-1130	Helping your child navigate the holidays Coffee Morning	Friends' House Maidenhead
Thursday 8 th December 0930-1130	Christmas Coffee Morning – drop in session	Friends' House Maidenhead
Thursday 19 th January 0930-1130	Emotional related School Avoidance (ERSA) and Anxiety Session with Magen Redmond & Hannah Forde (Ed Psych team)	Friends' House Maidenhead
Thursday 23 rd February 0930-1130	Coffee morning – drop in	Friend's House Maidenhead
Thursday 16 th March 0930-1130	EHC Needs Assessments explained with the IAS team	Friend's House Maidenhead
Thursday 20 th April 0930-1130	EHCP session – What happens when I have a plan - with Kelly Nash, Area SENCo	Friend's House Maidenhead
Thursday 18 th May 0930-1130	Coffee morning – drop in	Friend's House Maidenhead
Thursday 15 th June 0930-1130	The Autism Group - informal session with TAG to hear about the work they do, how they can help and their new initiative TAG Tots.	Friend's House Maidenhead
Thursday 13 th July 0930-1130	Summer Coffee morning	Friend's House Maidenhead

Email: ias@rbwm.gov.uk Telephone: 01628 683182 Website: www.ias-rbwm.info



NEW! Family Hub Website

The Family Hub have published their new website - it features a whole host of information regarding support for Children and young people, Parents support, Frequently asked questions, and an 'ask the service a question' service portal. Have a look by clicking the link below.

[AfC Info website - Windsor and Maidenhead :: Community Information / Information And Advice / Family Hub Service](#)

Register Now

You can now register for The Transition Event Online 2022

thetransitionevent.co.uk #TransitionEvent

the
transition
event hub
November 2022

FREE
EVENT

My Family Our Needs (MFON) : The Transition Event Online

A VIRTUAL EVENT FOR YOUNG PEOPLE WITH ADDITIONAL NEEDS AND THOSE WHO SUPPORT THEM.

The Transition Event Hub brings together experts, young people and parents/carers to talk about planning post-school transitions for young people with special educational needs and disabilities (SEND). Throughout the month of November, My Family Our Needs (MFON) will be signposting the MFON community to resources on a number of different transition topics to help navigate transition.

Whether you have a question relating to attending a specialist college, legal matters and EHC plans, or you would like to hear from another young person with SEND who can offer their advice, we hope our content supports you and the young people you care for during this next chapter of their lives.

Register here: [The Transition Event Online | Our events | My Family Our Needs](#)

My Life My Say event



My Life My Say will be hosting their event, Future of Britain: Next Generation, on December 10th.

The event aims to bring together youth leaders, policymakers, academics, and public figures for panel sessions.

The event is free and comes from My Life My Say, who are aiming to make politics more accessible to young people.
You can register for tickets [here](#).

CHRISTMAS 2022
19-22 DECEMBER

HOLIDAY ACTIVITIES & FOOD PROGRAMME

Easter, Summer Christmas

Funded by the Department for Education

FOR CHILDREN WITH ACCESS TO FREE SCHOOL MEALS



**The Royal Borough of
Windsor and Maidenhead**

E: HAF@achievingforchildren.org.uk



**achieving
for children**

Please see below for our FUEL providers. Full information on each provider including times plus the booking process can be found at our webpage:

<https://rbwm.afcinfo.org.uk/pages/community-information/information-and-advice/fuel-holiday-activities-and-food-programme>

To gain access to the booking links and codes for each provider please complete the [FUEL Interest Form](#). Booking information will be sent out to those who have submitted an Interest in the programme at 10am on 14 November. Any Interest forms received after the 14th November will receive a letter once their eligibility has been checked.

**Click here to
register an interest**

Extended Eligibility Criteria for access to FUEL:

- Accessing Pupil Premium
- Child in Care
- Ukrainian refugees
- Child being supported by Early Help or Social Care
- Children with an EHC (education, health and care) plan
- Young Carer

CLUBS/CAMPS AVAILABLE

AFC Family Hub SEN 5-12yrs **Larchfield Family Hub, 1 Bargeman Rd, Maidenhead, SL6 2SG**

Sensory activities for children with Special Educational Needs and their parents. PARENTS MUST ATTEND

AFC Family Hub 12-16yrs **Windsor Family Hub, Alma Rd, Windsor, SL4 3HD** (minibus pickups available in Maidenhead & Ascot)

Trips to Coral Reef and Jumpin Trampoline Park plus Youth Centre activities

Sanders Street Dance 5-16yrs **Cox Green Leisure Centre, Highfield Lane, Maidenhead, SL6 3AX**

Street dance styles including hip-hop, breaking, house, popping and locking. Along with street dance history. Confidence building, the importance of health and fitness in young people, teamwork and choreographic skills

4 Motion CIC 6-10yrs **The 4Motion Studio and Loading Bay Café, Vansittart Estate, Windsor, SL4 1SE**

We create a friendly and active space where young people can make friends, move freely and enjoy a wholesome healthy meal. Every day we will play games, learn dance routines, enjoy fun fitness, yoga, arts and crafts and work together as a team

Pop Up Play Village 5-8yrs **Cox Green Scout Hut, Cox Green Rd, Maidenhead, SL6 3ED**

Pop Up Play provide good quality, educational role play resources where children can learn and be active whilst using their imagination.

Creation Station 5-10yrs **Woodys Café and Hall, Dedworth, Windsor, SL4 5AY**

The children will be given the opportunity to develop their creative skills through a wide range of arts and craft activities. They will use various resources to create, build and decorate 3-4 activities each day, which they can then take home. This encourages self-esteem and builds up confidence to 'have a go' in a relaxed environment

Premier Sports 5-11yrs Larchfield Primary School, Maidenhead, SL6 2SG

Premier Education camps comprise elements of sporting activities, from traditional sports to less popular activities like fencing, archery and many more. There are also performing arts and wellbeing activities in a structured programme throughout the day

Sports 4 Kids 5-14yrs Trevelyan School, Windsor, Wood Close, Windsor SL4 3LL

S4K will provide engaging Multi Sports activities as well as football, arts and crafts and healthy living education

U Sports 5-12yrs Hilltop School, Windsor & St Lukes School, Maidenhead

Our Multi-Sports camp will include a wide range of sports, games, dance and activities. The aim of our camp is to provide your child with as many opportunities as possible to get inspired by sport and to encourage them to lead a healthy lifestyle. We will also be promoting healthy eating and you can be sure to find lots of fun educational games included throughout the day

SCL Active 5-12yrs Wessex Primary School, Maidenhead

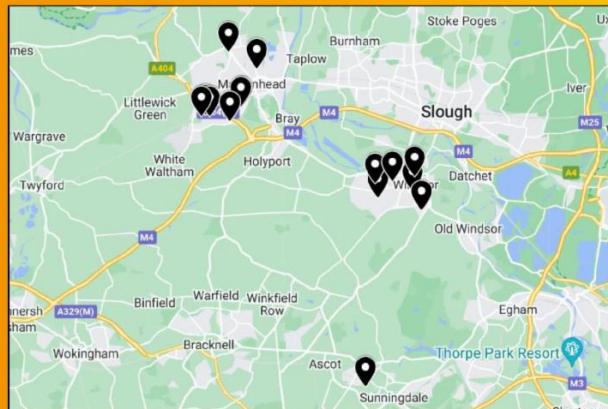
We create engaging experiences for children to have fun, learn more and move more. Christmas: Active Wonderland, sports, games and arts and craft activities

BA Sports 5-12yrs Charters and Cox Green Leisure Centres

Multi activity sports camp offering a variety of sporting activities daily

Magpies in the Community Football Camp 5-13yrs Dedworth Middle School, Windsor

Enjoy days filled with plenty of games and matches whilst focusing on a different topic each day

CLUB/CAMP LOCATIONS**Cost of Living Here to Help latest**

The Royal Borough has updated its Here to Help webpage www.rbwm.gov.uk/here-to-help which covers energy & water bills, rent, council tax, food, childcare, school meals, benefits & more. Safe, warm spaces have now also

**Have your say about the health and wellbeing of your children**

If you've used the Royal Borough's Health Visiting or School Nursing services in the past 5 years, the council would love to hear from you. This will help them understand your views on its current services & what

been set up across the borough
<https://rbwmtogether.rbwm.gov.uk/warm-safe-spaces-map>.

If you're running a safe, warm space & want to be added to the map, please email
communications@rbwm.gov.uk.

you'd like to see in the future.

<https://bit.ly/3gY2QXy>

The survey ends 30 Nov.



What's happening with the Government's SEND Review?

An update from the Independent Provider of Special Educational Advice (IPSEA)
It's nearly three years since the Government first announced that it was carrying out a major review of the system for supporting children and young people with SEND, seven months since the SEND green paper was published setting out proposals for reform, and three months since the public consultation on these proposals ended.

[What's happening with the Government's SEND Review? \(ipsea.org.uk\)](https://ipsea.org.uk)

GEMS



GEMS
Autism & ADHD Support Service
East Berkshire

01753 373 244 / 0800 999 1342

<https://www.gems4health.com>

gems.4health@nhs.net

GEMS is for children, young people and adults who are diagnosed with, or who may have, autism and/or attention deficit hyperactivity disorder (ADHD). The service also supports parents and carers and is open to anyone living in Slough, Royal Borough of Windsor and Maidenhead or Bracknell Forest.



WHAT DO WE PROVIDE?

Whatever stage of your autism/ADHD journey, GEMS offers a single point of contact where you can access information, advice and support alongside courses, workshops and animations.

✦ For parents and carers: Workshops, animations & Courses

For children and young people aged 5 & over: online & face

✦ to face social groups

✦ For adults aged 25 & over social activities group





GEMS

Autism & ADHD Support Service
East Berkshire



BEAR CUBS

AGES 5 TO 10



ONLINE AND FACE TO FACE ACTIVITIES! FIRST
& THIRD FRIDAY OF EACH MONTH @4PM

Registration:

GEMS.4health@nhs.net
0800 999 1342

Activities

15/07/22 Maidenhead - Yoga Fun - Braywick Park
05/08/22 Online - Lego Building
19/08/22 Bracknell - Sports day! - South Hill Park
02/09/22 Online - What do I want to be when I grow up?
16/09/22 Online - Treasure map & Pirate design & Name
07/10/22 Windsor - Rugby Fun - Home Park
21/10/22 Online - Design your superhero & Powers
04/11/22 TBC - Low noise fireworks display - Camp Mohawk
18/11/22 Online - Poem/Rap writing
02/12/22 Online - Christmas card designs
16/12/22 Slough - Christmas party -TBC

Please note activities may be subject to change

Criteria:

Children with or likely to have
ADHD &/or Autism & living in
East Berkshire



More Information: 0800 999 1342 WWW.GEMS4HEALTH.COM



GEMS

Autism & ADHD Support Service
East Berkshire

WOLF PACK

AGES 11 TO 15



**ONLINE AND FACE TO FACE
ACTIVITIES!**

SECOND FRIDAY OF EVERY MONTH @430PM

Registration:

GEMS.4health@nhs.net
0800 999 1342

Criteria:

Children with or likely to have
ADHD &/or Autism & living in
East Berkshire

Activities

08/07/22 Online - Poem/RapWriting
12/08/22 Slough - Basketball Fun - Mercian Way Park
09/09/22 Online - App Invention and pitch
14/10/22 Bracknell - Fitness session - South Hill park
11/11/22 Windsor - Rugby Fun
09/12/22 TBC - Christmas meet up

Please note activities may be subject to change

More Information: 0800 999 1342 WWW.GEMS4HEALTH.COM



GEMS

Autism & ADHD Support Service
East Berkshire

CONNECTIONZ

AGES 16 & OVER



**ONLINE AND FACE TO FACE
ACTIVITIES!**

LAST TUESDAY OF THE MONTH @ 630PM

Registration:

GEMS.4health@nhs.net
0800 999 1342

Criteria:

Young adults with or likely to
have ADHD &/or Autism & living
in East Berkshire

Activities

26th July - Walk and Talk - Windsor
30th August - Sunset Picnic- Slough
27th September - Board Games - Bracknell
25th October - Meal and meet Up - Taplow
29th November - Bowling - Bracknell
20th December - Christmas meet up - Windsor

Please note activities may be subject to change

More Information: 0800 999 1342 WWW.GEMS4HEALTH.COM



DIAMONDS

AGES 25 & OVER

ONLINE AND FACE TO FACE ACTIVITIES!
1ST THURSDAY OF EVERY MONTH

Registration:
GEMS.4health@nhs.net
0800 999 1342

Criteria:
Adults with or likely to have
ADHD &/or Autism & living in
East Berkshire

Activities

- 06/10/22 - Bowling - Bracknell
- 03/11/22 - Board Games - Slough
- 01/12/22 - Christmas Market - Berkshire Location TBC

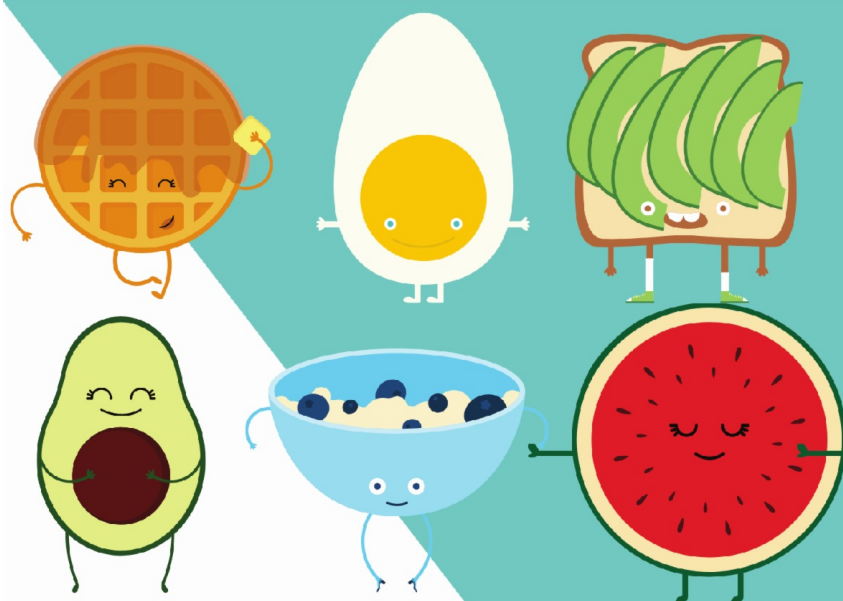
Please note activities may be subject to change

More Information: 0800 999 1342 / www.gems4health.co.uk



GEMS
Autism & ADHD Support Service
East Berkshire

01753 373 244 / 0800 999 1342
<https://www.gems4health.com>
gems.4health@nhs.net



Autism & Food Workshop

Online Delivery

Tuesday 2nd August 10am to 12pm

Wednesday 7th September 6.30pm to 8pm

Monday 31st October 10am to 11.30am

Tuesday 22nd November 6.30pm to 8pm

Tuesday 13th December 10am to 11.30am

Registration:

GEMS.4health@nhs.net
0800 999 1342