

## Headteacher Update

Dear Parents/Carers

I hope that all is well with you and your families this week.

January is named after Janus, the Roman god of doors and transitions, symbolising new beginnings. So I think this month is a good time to share with you our Lunchtime clubs for our students. They may wish to try something new or to continue with their existing one.

Club	Day	Where
Digital Technology	Mondays	IT Suite
Games Club	Monday	Maths resource room
Mindfulness Colouring	Tuesday	Library
Film Club	Wednesdays	Library
Choir	Thursdays	Next to IT Suite
Dance Club	Thursday	Outside Life skill class
Woodwork Club	Fridays	Woodwork room

### **Digital Music and Coding**

Become a music producer: learn how to use online tools to create your own music! Coding games: learn to code by editing existing codes, following tutorials and creating your own games! Join us on Monday afternoons in the IT Suite.

### **Games Club**

Come and join us at our Games Club! Whatever sort of game you like to play, we are sure that we can find something to interest you. Uno, Snakes and Ladders, we have a broad range of different games for you to play. Join us on Monday afternoon in the Maths resource room.

### **Mindfulness Colouring**

Fancy a quiet and peaceful place where you can colour, draw and let your imagination run wild? Feel free to join us on Tuesday afternoons in the library.

### **Film Club**

Enjoy your free time watching a film in a relaxed, friendly setting. A great way to enjoy lunchtime, chill out, and have fun with friends. Feel free to join us on Wednesday afternoons in the library.

### **Choir club**

Come and along and sing an eclectic mix of songs with Makaton. You will also have the opportunity to take part in our concerts. Just turn up on Thursdays at 12pm next to the ICT Suite.



Treat People Kindly . Listen To Each Other . Look After Our School Environment . Do Our Best

---

## Headteacher Update

### **Dance Club**

Come and enjoy a dance club where we can come together to explore different styles of dancing, improve skills and share the love of dance. Whether you want to learn, perform, or just have fun this is the place for you. Thursday's outside the Life skills class.

### **Woodwork Club**

Love making things? Come along and turn your ideas into reality! You'll learn how to use tools safely, try out new skills, and create awesome projects to take home. No experience needed – just bring your imagination and get ready to build, design, and have fun with friends. Friday's in the woodworking room.

### **After School Collection—Reminder**

When collecting your child please ensure that you are at school by 15.10 at the latest. Staff are only onsite until 15.15.

### **Working at Manor Green School**

If you or if you know of anyone else that would be interested in joining our wonderful team at Manor Green School, then please follow the link to our Vacancies page on our website. Please contact our HR Department if you would like to discuss any of the advertised positions further. [Vacancies](#) | [Manor Green School](#)

### **Excellence Everywhere**

Excellence Everywhere is back! Please click on the link below or go to our website to view this week's video.

<https://youtu.be/bEEl0vzj2IY>

I hope that you have an enjoyable weekend.

Thank you for your continued support as always.

Warm regards

Helen Hannam  
Headteacher

### Parent Support Team

If you need help with Microsoft Teams or password resets, etc. please contact our ICT team on: [offsite.tech@manorgreenschool.co.uk](mailto:offsite.tech@manorgreenschool.co.uk)

### Privacy Notice

The school's privacy notice is available from the [website](#)

### Weekly emails

If you do not receive our weekly emails please me know:

[Charlotte.deer@manorgreenschool.co.uk](mailto:Charlotte.deer@manorgreenschool.co.uk) They are always available from the [website](#).

### Parent/Carer Social Events

#### Hosted by Parenting Special Children

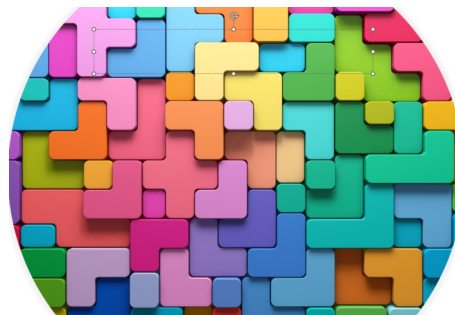
This neuro-affirming, strengths based, interactive workshop is designed to help parents/carers better understand the unique experiences of AuDHD (Autistic and ADHD) children and young people.

Exploring AuDHD strengths and challenges,  
Practical strategies for home and school,  
Reframing so called 'difficult' behaviours,  
Supporting child's self-esteem and self-advocacy.

Booking link

[:https://parentingspecialchildren.co.uk/events/audhd-workshop-berkshire-east-dec-2025/](https://parentingspecialchildren.co.uk/events/audhd-workshop-berkshire-east-dec-2025/)

Our workshops and courses are available to families who reside or is registered at a GP practice in East Berkshire , Slough, Windsor, Maidenhead and Bracknell.



### Hum Jolly - School Café 09.30 –11.00

Hum Jolly is a social gathering for all parents in our Asian community. We meet every fortnight on Tuesdays in our school café between 09.30 and 11.00.

Please email [shareen.hussain@manorgreenschool.co.uk](mailto:shareen.hussain@manorgreenschool.co.uk) if you would like more information

Tuesday 13 January 2026

Tuesday 27 January 2026

Tuesday 10 February



### Coffee & Chat—School Café 09.30—11.00

Friday 23 January 2026

Friday 6 February 2026

Friday 13 March 2026

## Manor Green School Housekeeping

### Morning Drop Off

**PLEASE NOTE WE WILL NOT ALLOW ANY VEHICLES BRINGING STUDENTS ON THE SCHOOL SITE BEFORE 08:50. ANY VEHICLES ARRIVING EARLY WILL BE TURNED AWAY.**

**08:50 to 09:00:** School transport vehicles arrive on site.

**09:00:** Staff collect students from school transport.

**09:00 to 09:10:** Parents arrive on site.

**09:10:** Staff collect students from parents.

**09:20 to 09:30:** Link parents and Link school transport arrive on site

**09:30:** Staff collect all Link students

School staff **must** be at the front of the school at **09:00** ready to collect the students from the vehicles.

Staff will only wait at the front of the school for the delayed students until 09:20. Staff should wait in the reception area to help communication with the receptionist.

### Afternoon Pick Up

**PLEASE NOTE WE WILL NOT ALLOW ANY VEHICLES COLLECTING MANOR GREEN STUDENTS ON THE SCHOOL SITE BEFORE 14:40. ANY VEHICLES ARRIVING EARLY WILL BE TURNED AWAY.**

**14:20 to 14:30:** Link parents and Link school transport arrive on site

**14:30:** Link students taken to parents and transport

**14:40 to 14:50:** School transport vehicles arrive on site

**14:50:** Students on school transport taken to vehicles

**14:50 to 15:00:** Parents arrive on site

**15:00:** Students taken to parents

Staff **must** bring all students to the front of school at **14:50** for collection.

Students will be brought out to vehicles by school staff in the normal way.

Afternoon pick up: escorts should collect the students from the school staff.

## Foundation Park

A polite reminder that parents should not be parking at the entrance to Foundation Park when dropping off or picking up children. This is not a drop-off pickup point for the school and we need to respect our neighbours. Thank you for your co-operation.

## Contacting Staff at Manor Green School


If you need to contact staff at school please follow school procedure by contacting the class teacher in the first instance with any concerns. This will then passed to the relevant assistant headteacher if it cannot be resolved with the teacher.

## Arbor Management Information System App

We use Arbor to communicate with parents.

Please contact Nicola Camano at

[data@manorgreenschool.co.uk](mailto:data@manorgreenschool.co.uk) If you are experiencing problems with logging in



We're using Arbor's free Parent Portal and Arbor App

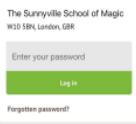
We've chosen Arbor to help us manage our school.

Arbor is a simple, smart and cloud-based MIS (Management Information System), which helps us work faster, smarter and more collaboratively as a school. The Arbor App and Parent Portal mean we can keep you informed about your child's life at school in a much more accessible way. Log into Arbor to see and update your child's information, get live updates and make payments or bookings on the go!

The Parent Portal works on Google Chrome (computer or laptop) and you can download the Arbor App from the App Store or Google Play Store on your phone (Android 5.0; iOS 10.0 and upwards).

### How to get started

1. Wait for your welcome email from us telling you Arbor is ready - you won't be able to log in before
2. Click the link in your welcome email to set up your password
3. Go to the App or Google Play Store on your phone and search 'Arbor'
4. Click 'install' on Android or 'Get' on iPhone then open the App
5. Enter your email, select the school, then enter your password
6. Accept the Terms & Conditions and enter your child's birthday



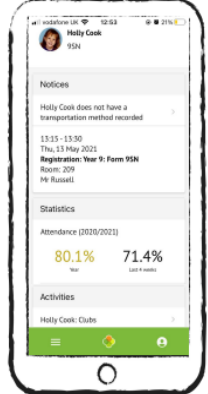
### Need help using Arbor?

Contact the school office if you have questions about Arbor, the App or Parent Portal. Tell us the type and model of your phone, e.g. an iPhone SE, and include screenshots or screen recordings.

To safeguard student data in line with General Data Protection Regulations (GDPR), Arbor only works directly with schools.

Some tips to try:

1. Ensure your username is the email address you use for Arbor. Ask us to **check the email address** linked to your account.
2. **Reset your password** from the login page, or ask us to do this.
3. If the login email was sent to you more than 96 hours ago, the **password link will have expired**. Ask us to send it again.
4. Ask the school office to check that your email address has not been used twice - e.g. on another guardian or child's profile.
5. **Enter the birthday** of one of your children to log in.
6. Only relatives who are **Primary Guardians** of a child can access the Arbor App. Ask us to check you can access Arbor.



**MENTAL HEALTH SUPPORT AND  
GETTING HELP TEAMS**

**NHS**  
Berkshire Healthcare  
Children, Young People and  
Families services

# LIVE WEBINARS

## 2026

**FOR  
PARENTS  
AND CARERS**



TO SIGN UP, SCAN THE QR  
CODES ON THE NEXT PAGE

**Dates: Various**

**Time: 6pm - 7pm**

**Microsoft Teams**

for more information about the Royal  
Borough of Windsor and Maidenhead  
Mental Health Support Team please  
scan the QR code.



**21/01/26**  
Supporting Low Mood



**05/02/26**  
Supporting with Sleep  
Under 11's



**26/02/26**  
Supporting with sleep  
over 12's



**24/03/26**  
Building Positive  
Relationships at Home



**22/04/26**  
Exam Stress  
Under 11's

**Scan the QR code to book your place**





**SPACE TO THRIVE**  
COMMUNITY MUSIC CENTRE  
A BERKSHIRE MUSIC TRUST AND SLOUGH MUSIC SERVICE PARTNERSHIP

## Calling all Young Musicians!

### Let's Play Orchestra

Saturday 10.15-11.00am

Open to any instrument from beginner up to Grade 1. Explore making music with others through easy parts, beat & melody games, and ensemble fun.

Fees: £70.00 per term

HALF PRICE THIS TERM for new members:  
£35.00 for TEN SESSIONS

### Initial Orchestra

Saturday 9.00-10.00am

Open to any instrument Grades 1-3. A more adventurous orchestral experience focusing on holding your own part, reading rhythms, and collaborating as a musical team.

Fees: £79.50 per term

HALF PRICE THIS TERM for new members:  
£39.75 for TEN SESSIONS

[Click here](#) for a free trial orchestra session on Saturday 17 January

[Click here](#) to attend the launch event on Saturday 10 January

**Any Questions?** contact [laurabridger@berksmusictrust.org.uk](mailto:laurabridger@berksmusictrust.org.uk)

**SPACE TO THRIVE**  
COMMUNITY MUSIC CENTRE  
A BERKSHIRE MUSIC TRUST AND SLOUGH MUSIC SERVICE PARTNERSHIP  
Newland Girls' School, Farm Road, Maidenhead, SL6 5JB



## Start their musical journey

### Mini Maestros classes have incredible benefits for children

- 🎵 Boost brain power
- 🗣️ Support speech & language
- 🧠 Improve memory & focus
- 🕺 Help coordination & movement
- 💖 Build confidence & wellbeing

### Preschool & Reception

Saturday 8.55-9.25am  
£79.50 per term incl. Recorder Rookies

### Year 1 & Year 2

Saturday 10.15-10.55am  
£79.50 per term incl. Recorder Rookies

[Click here](#) to register for a free Mini Maestros taster session

[Click here](#) to attend the launch event on Saturday 10 January



## January 2026 Timetable

All sessions delivered live online via zoom. 90 minutes long

**£24 each or FREE with School Membership**

Book online at [facefamilyadvice.co.uk](http://facefamilyadvice.co.uk)

Recordings available for 48 hours (excluding Free Talk)

Autism - Improving Communication	5 Jan 10am
Improving Family Communication	5 Jan 7pm
Supporting A Child with ADHD	6 Jan 10am
Understanding Addictive Behaviour	6 Jan 7pm
Anxiety Based School Avoidance	12 Jan 10am
Understanding Anger	12 Jan 7pm
Supporting Healthy Screen Use	13 Jan 10am
Facing Defiance	13 Jan 7pm
Cannabis and Ketamine Awareness	19 Jan 10am
Anxiety Explained	19 Jan 7pm
Introduction to OCD	20 Jan 10am
What Is ACT	20 Jan 7pm
<b>FREE Responding to Angry Behaviour</b>	22 Jan 7-8pm
Raising Self-Esteem	26 Jan 10am
Decreasing Depression	26 Jan 7pm
Supporting Healthy Sleep	27 Jan 10am
Understanding the Teenage Brain	27 Jan 7pm



01753 373 244 / 0800 999 1342  
weekdays 9am to 5pm  
<https://www.gems4health.com>  
[gems.4health@nhs.net](mailto:gems.4health@nhs.net)

GEMS works with parents and carers, sharing understanding of autism & ADHD and collaborating on strategies that respect each child or young person's ways of being in the home environment.  
GEMS supports families living or has a registered GP in Slough, Royal Borough of Windsor and Maidenhead and Bracknell Forest.

## UPCOMING WORKSHOPS AND COURSES

**AuDHD - 7pm to 9pm**  
**Tuesday 3<sup>rd</sup> February 2026**

**Autistic Burnout - 7:30 to 9:30pm**  
**Wednesday 4<sup>th</sup> February 2026**

**Sleep - Autism and ADHD , 7-9pm**  
**Wednesday 4<sup>th</sup> February 2026**

**Sensory Processing - 7 to 9pm**  
**Tuesday 24<sup>th</sup> February 2026**

**Interoception - 7 to 9pm**  
**Tuesday 3<sup>rd</sup> March 2026**

**Barriers to School, Can't Go, Not Won't Go - 10am to 12noon**  
**Wednesday 25<sup>th</sup> March 2026**

Visit our website to book your space - [www.Gems4Health.com](http://www.Gems4Health.com)



## SEN Sessions in the surrounding area

**Moo Music** – Moo Music in Bracknell offer SEN Sensory Sessions specifically designed for children with additional needs such as ADHD, ASD and SPD. They have lots of sensory lights and toys to explore with calming music playing. Please click [here](#) for more information and to book.

**Big On Bouncing Soft Play** – They are based in Slough and offer regular SEN soft play sessions. Please visit their [website](#) for further information. Berkshire Mummies has previously reviewed the [Big On Bouncing Soft Play](#).

**Building for the Future** – A Wokingham based, parent led charity providing activities, support and therapy for children with disabilities and/or additional needs and their families. There is a fully accessible play area where they run their stay and play sessions. Click [here](#) for further details.

**Jump In** – An indoor trampoline park. SEN sessions are for anyone aged 4+ who prefers a quieter session without music and reduced lighting. Jump In can be found in Slough and Camberley. Visit the [website](#) for further details.

**Coral Reef Waterworld** – One of the largest interactive water worlds in England with a range of waterslides, an erupting volcano, pirate ship and lots more. The Accessible for Everyone sessions are an opportunity exclusively for customers with disabilities their families, carers and friends to enjoy Coral Reef and its iconic waterslides. These run once per month. Please check their [website](#) for further details on dates and to book.

*GEMS Hosted by The Autism Group:*

Understanding and responding to distressed behaviour in autistic young people' with the aims being; To understand physical responses to anxiety, distress and overwhelm.

To explore what this might look like and think about who is challenging who! To learn some strategies to try to help.

**Clip n' Climb** – Clip n' Climb Reading offer SEND sessions on a Tuesday. Click [here](#) for more details.

**Chance to Dance Stars** – A dance school for students and families in the disabled community. Classes run in Bracknell and Reading. Please click [here](#) for further information.

**Thames Valley Adventure Playground** – Is a charity that offers a unique range of adventurous, therapeutic and educational play activities for both children and adults, mild or profound. Visit their [website](#) for more detail.

For more information click [here](#).

**The Autism Group** – A Maidenhead based charity committed to supporting and enhancing the lives of young people on the spectrum, their parents and carers. They offer workshops, clubs and parent support services. Click [here](#) to visit their website.

**Together, one step at a time.** An inclusive SEND community providing sensory safe sessions for families based in Reading, Berkshire. Click [here](#) for more details.

**Me2 Club** is an inclusion charity for children and young people (aged 5-19 years) with additional needs and disabilities in Wokingham and Reading Boroughs. You can find out more on their website [here](#).

**Bracknell Trampoline Centre** – They run two SEND classes during term time, for children and adults with special educational needs and disabilities (age 5+) on Saturdays 12.30pm and 1.30pm. Participation is by invitation only



Treat People Kindly . Listen To Each Other . Look After Our School Environment . Do Our Best

**MANOR GREEN SCHOOL MENU DATES 2025 - 2026**

**WK1 03/11/25, 24/11/25, 15/12/25, 19/1/25, 09/02/26, 09/03/25**

**WK2 10/11/25, 01/12/25, 05/01/26, 26/01/26, 16/02/26, 16/03/26**

**WK3 17/11/25, 08/12/25, 12/01/26, 02/02/26, 23/03/26, 23/03/26**

**MANOR GREEN SCHOOL  
AUTUMN & WINTER MENU 2025 - 2026**

	Week One	Week Two	Week Three
Monday	Toad in the Hole Sweet & Sour Quorn with Noodle Veg of the Day True Sponge with Custard	Beef Bolognese Bean & Vegetable Hot Pot Veg of the Day Jam Sponge and Custard	Chicken Enchiladas with Jacket Wedges Shepherdess Pie Veg of the Day Eve Pudding with Custard
Tuesday	Chilli Con Carne with Rice Vegetable Wrap Veg of the day Fruity Flapjack with Custard	Sausage & Mash Cauliflower & Broccoli Cheese Veg of the Day Flapjack with Custard	Beef Lasagne Vegetarian Sausages & Steamed Potatoes Veg of the day Apple flapjack with Custard
Wednesday	Roast of the Day with Roast Potatoes And Gravy Mixed Bean Casserole Veg of the Day Rice Pudding with Jam	Roast of the Day with Roast Potatoes and Gravy Vegetable Pasta Baked Veg of the Day Bread & Butter Pudding with Custard	Roast of the day with Roast Potatoes and Gravy Vegetarian Burrito Veg of the Day Lemon Drizzle with Custard with Custard
Thursday	Chicken Curry with Rice Lentil & Sweet Potatoes Curry with Rice Veg of the day  Peach Crumble with Custard	Chicken Curry with Rice Quorn & Vegetable Curry with Rice Veg of the day Pineapple Upside Down with Custard	Chicken Curry with Rice Chickpea & Potatoes Curry with Rice  Veg of the Day  Fruit Crumble with Custard
Friday	Fish Fingers with Chips Margherita Pizza Veg of the Day Carrot Cake with Custard	Fish Fingers with Chips Creamy & Vegetable Pie Veg of the Day Chocolate Short Bread with Custard	Fish Fingers with Chips Vegetable Sausage Toad in the Hole Veg of the Day Apple Pie with Custard

*Freshly made sandwiches, Tomato pasta, Fresh fruit, Cheese and crackers & salad available daily*

Date	Time	Event
Monday 5 January 2026	08.45-16.30	Staff Training
Tuesday 6 January 2026	8.55	Term Begins for Students
Monday 12 January 2026	Morning	Y9 Tetanus/Diphtheria/Polio booster & Meningitis ACWY/MMR catch-up
Tuesday 13 January 2026	09.30-11.00	Hum Jolly in School Cafe
Wednesday 21 January 2026	13.30-14.30	Upper School Showcase
Friday 23 January	09.30-11.00	Coffee & Chat in school cafe
Tuesday 27 January 2026	09.30-11.00	Hum Jolly in school cafe
Friday 6 February 2026	09.30 - 11.00	Coffee & Chat in school cafe
Tuesday 10 February 2026	09.30 - 11.00	Hum Jolly in school cafe
Thursday 12 February	09.30 - 11.30	Stay and Play and Coffee Morning
Friday 13 February	15.15	Term Ends
Monday 16 February to Friday 20 February		FEBRUARY HOLIDAY
Monday 23 Febraury 2026	8.55	Term begins for Students
Tuesday 24 February 2026	10.30-11.00	Tetanus/Diphtheria/Polio booster & Meningitis ACWY/MMR catch-up
Tuesday 3 March 2026	09.30-11.00	Hum Jolly in School Cafe
Thursday 5 March 2026		World Book Day
Friday 6 March 2026		Fundraising Day
Friday 13 March 2026	09.30-11.00	Coffee & Chat in school cafe
Tuesday 17 March 2026	10.00-10.45	Middle School Production
Wednesday 18 March 2026	10.00-10.45	Middle School Production
Saturday 21 March 2026		Down Syndrome Day
Tuesday 24 March 2026	09.30-11.00	Hum Jolly in School Cafe
Friday 27 March 2026	09.45-11.30	First School Easter Celebration
		Easter Egg Hunt
		Coffee Morning
		Term Ends
Monday 30 March to Friday 10 April 2026		Spring Holiday
3 April- Good Friday - 6 April Easter Monday		
Monday 13 April 2026	8.55	Term Begins for Students





## School Term Dates—Academic Year 2025-2026—School Year 195 days

### AUTUMN 2025 Term 1 (38 days)

Staff Training: Wednesday 3 September 2025

Term starts on: Thursday 4 September 2025

Term ends on: Thursday 23 October 2025

Staff Training: Friday, 24 October 2025

October Holiday: Monday 27 October to Friday 31st October 2025

### Term 2 (35 days)

Term starts on: Monday 3 November 2025

Term ends on: Friday 19 December 2025

Christmas Holiday: Monday 22 December 2025 to Friday 2 January 2026

### SPRING 2026 Term 3 (30 days)

Staff Training: Monday 5 January 2026

Term starts on: Tuesday 6 January 2026 Term ends on: Friday 13 February 2026

February Holiday: Monday 16 February 2026 to Friday 20 February 2026

Term 4 (25 days) Term starts on: Monday 23 February 2026

Term ends on: Friday 27 March 2026 Spring Holiday:

Monday 30 March to Friday, 10 April 2026 (Good Friday – 3 April; Easter Monday – 6 April)

### SUMMER 2026 Term 5 (29 days)

Term starts on: Monday 13 April 2026 Bank Holiday Monday 4 May 2026

Term ends on: Friday 22 May 2026

May Holiday: Monday 25 May to Friday 29 May 2026

Term 6 (38 days)

Staff Training : Monday 1 June 2026

Term starts on: Tuesday 2 June 2026

Staff Training: Friday 17 July 2026

Staff Training: Monday 20 July 2026

Transition period for students: Tuesday 21 July to Wednesday 22 July 2026

Term ends on: Wednesday, 22 July 2026