

Headteacher Update

Dear Parents/Carers

I hope you have had a great week, we have been busy preparing for the May Fayre that will be taking place on Friday 1 May 2026 from 09.30 to 11.30. We look forward to seeing you there. Please remember to bring smaller change and no large notes. Please ensure that you sign in upon arrival.

Trip to Englefield Garden Centre

Another fascinating week in our school garden: the students from WEX Horticulture Daniel and Adam visited a garden centre, where they collected compost for us and did some shopping for our spring planting. We are very proud of their work.





Treat People Kindly . Listen To Each Other . Look After Our School Environment . Do Our Best

Headteacher Update

Excellence Everywhere

Issue #17 - <https://youtu.be/6538PwTYh0I>

Issue #18 - <https://youtu.be/6KgRPHKiQzc>

Manor Green School Senior Leadership Team would like to present their Curriculum Stand Information to our current parents/carers. Please use the link below to book a place on Tuesday 19 May at 15.30.

<https://www.eventbrite.com/e/curriculum-strand-information-tickets-1988563751712?aff=oddtcreator>



SEND Reforms Consultation
Round Table
How can we make sure families are genuinely involved in SEND decisions?
Friday 8th May

There will be 2 sessions to discuss and gather your feedback on the proposed SEND Reforms. This will help inform Bracknellm PCF's response to the consultation.
Both sessions will cover the same content

Session 1 - 9:30am - 11:30am
Bracknell Open Learning Centre, Rectory Lane,
Bracknell, RG12 7GR
Refreshments provided

Session 2 - 7pm - 9pm
Online on Teams

Sign up on Eventbrite:
tinyurl.com/EventbriteBPCF



Please complete the SEND Reforms consultation and feel free to join the event(details above).

Thank you as always for your support, I hope you have a wonderful weekend, remember school will be closed on Monday for the Bank holiday, we will see on Tuesday at 08.55.



Warm regards

Helen Hannam

Headteacher



Treat People Kindly . Listen To Each Other . Look After Our School Environment . Do Our Best

Crowdfunding—Updating our Equipment

Thank you to all those that have donated so far—your generosity means so much to us and will make a huge difference to our school.

Please support us with our Crowdfunder project with ‘Help Us Refresh Our Sensory Garden & Sensory Rooms’.

We are reaching out to our school community and beyond to help us raise funds to refurbish our much-loved sensory garden and sensory rooms.

<https://www.crowdfunder.co.uk/p/send-sensory-garden--manor-green-school>

These spaces are not just areas within our school — they are safe havens. They provide calm, comfort, stimulation, and support for students who need sensory regulation to learn, grow, and thrive.

For many of our students, these environments are essential. They:

- Support emotional regulation
- Reduce anxiety and sensory overload
- Encourage communication and interaction
- Promote independence and wellbeing
- Create opportunities for therapeutic and sensory learning

So far, we have raised £3,750 out of our £10,000 goal. Please help us get nearer to our target by donating and sharing the QR Code with your friends and families.

Over time, our equipment and outdoor features have become worn and outdated. With your support, we hope to:

- Update sensory equipment and interactive resources
- Improve accessibility and safety
- Introduce new calming and stimulating features
- Create an inclusive, nurturing environment for every child

Every contribution — big or small — will make a meaningful difference to our students’ daily experiences at school.

If you would like to donate or support our fundraising efforts, please get in touch with Charlotte Deer

Charlotte.deer@manorgreenschool.co.uk

Together, we can create spaces where every child feels safe, supported, and inspired.

Thank you for your kindness and generosity.



Parent/Carer Social Events

Hum Jolly - School Café 09.30 –11.00

Hum Jolly is a social gathering for all parents in our Asian community. We meet every fortnight on Tuesdays in our school café between 09.30 and 11.00.

Please email

shareen.hussain@manorgreenschool.co.uk

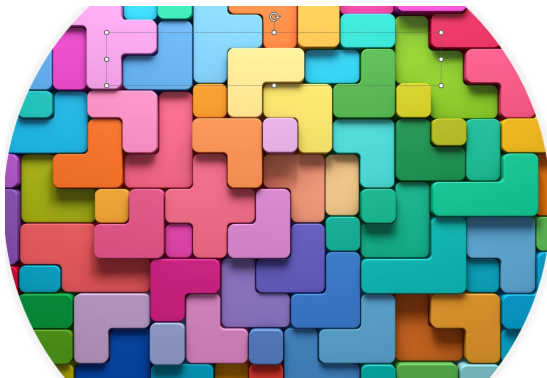
If you would like more information

Tuesday 21 April 2026

Tuesday 5 May 2026

Tuesday 19 May 2026

Tuesday 9 June 2026



Parent Support Team

If you need help with Microsoft Teams or password resets, etc. please contact our ICT team on:

offsite.tech@manorgreenschool.co.uk

Privacy Notice

The school's privacy notice is available from the [website](#)

Weekly emails

If you do not receive our weekly emails please me know:

Charlotte.deer@manorgreenschool.co.uk They are always available from the [website](#).

Coffee & Chat—School Café 09.30—11.00

Coffee & Chat is a chance for parents and carers to come together over a coffee and perhaps a slice of cake made by our catering staff.

Please email

Nagina.pazir@manorgreenschool.co.uk if you would like more information

Friday 15 May 2026

Friday 5 June 2026

Friday 19 June 2026

Friday 3 July 2026



Manor Green School Housekeeping

Morning Drop Off

PLEASE NOTE WE WILL NOT ALLOW ANY VEHICLES BRINGING STUDENTS ON THE SCHOOL SITE BEFORE 08:50. ANY VEHICLES ARRIVING EARLY WILL BE TURNED AWAY.

08:50 to 09:00: School transport vehicles arrive on site.

09:00: Staff collect students from school transport.

09:00 to 09:10: Parents arrive on site.

09:10: Staff collect students from parents.

09:20 to 09:30: Link parents and Link school transport arrive on site

09:30: Staff collect all Link students

School staff **must** be at the front of the school at **09:00** ready to collect the students from the vehicles.

Staff will only wait at the front of the school for the delayed students until 09:20. Staff should wait in the reception area to help communication with the receptionist.

Afternoon Pick Up

PLEASE NOTE WE WILL NOT ALLOW ANY VEHICLES COLLECTING MANOR GREEN STUDENTS ON THE SCHOOL SITE BEFORE 14:40. ANY VEHICLES ARRIVING EARLY WILL BE TURNED AWAY.

14:20 to 14:30: Link parents and Link school transport arrive on site

14:30: Link students taken to parents and transport

14:40 to 14:50: School transport vehicles arrive on site

14:50: Students on school transport taken to vehicles

14:50 to 15:00: Parents arrive on site

15:00: Students taken to parents

Staff **must** bring all students to the front of school at **14:50** for collection.

Students will be brought out to vehicles by school staff in the normal way.

Afternoon pick up: escorts should collect the students from the school staff.

Foundation Park

A polite reminder that parents should not be parking at the entrance to Foundation Park when dropping off or picking up children. This is not a drop-off pickup point for the school and we need to respect our neighbours. Thank you for your co-operation.

Contacting Staff at Manor Green School

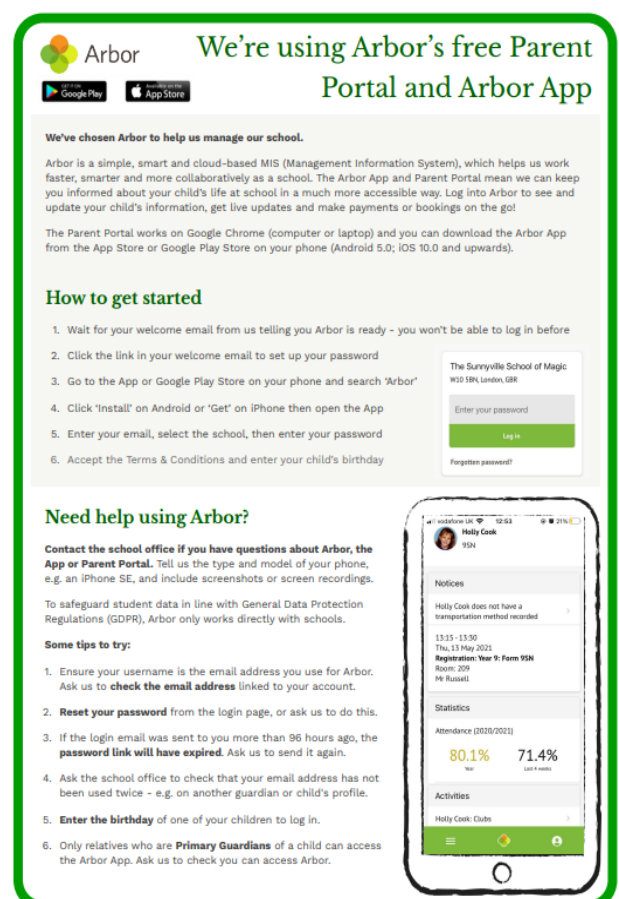
If you need to contact staff at school please follow school procedure by contacting the class teacher in the first instance with any concerns. This will then passed to the relevant assistant headteacher if it cannot be resolved with the teacher.

Arbor Management Information System App

We use Arbor to communicate with parents.

Please contact Nicola Camano at

data@manorgreenschool.co.uk If you are experiencing problems with logging in



Arbor We're using Arbor's free Parent Portal and Arbor App

We've chosen Arbor to help us manage our school.

Arbor is a simple, smart and cloud-based MIS (Management Information System), which helps us work faster, smarter and more collaboratively as a school. The Arbor App and Parent Portal mean we can keep you informed about your child's life at school in a much more accessible way. Log into Arbor to see and update your child's information, get live updates and make payments or bookings on the go!

The Parent Portal works on Google Chrome (computer or laptop) and you can download the Arbor App from the App Store or Google Play Store on your phone (Android 5.0; IOS 10.0 and upwards).

How to get started

1. Wait for your welcome email from us telling you Arbor is ready - you won't be able to log in before
2. Click the link in your welcome email to set up your password
3. Go to the App or Google Play Store on your phone and search 'Arbor'
4. Click "install" on Android or "Get" on iPhone then open the App
5. Enter your email, select the school, then enter your password
6. Accept the Terms & Conditions and enter your child's birthday

Need help using Arbor?

Contact the school office if you have questions about Arbor, the App or Parent Portal. Tell us the type and model of your phone, e.g. an iPhone SE, and include screenshots or screen recordings.

To safeguard student data in line with General Data Protection Regulations (GDPR), Arbor only works directly with schools.

Some tips to try:

1. Ensure your username is the email address you use for Arbor. Ask us to **check the email address** linked to your account.
2. **Reset your password** from the login page, or ask us to do this.
3. If the login email was sent to you more than 96 hours ago, the **password link will have expired**. Ask us to send it again.
4. Ask the school office to check that your email address has not been used twice - e.g. on another guardian or child's profile.
5. **Enter the birthday** of one of your children to log in.
6. Only relatives who are **Primary Guardians** of a child can access the Arbor App. Ask us to check you can access Arbor.

The screenshot shows the login page for 'The Sunnyville School of Magic' and a mobile app interface for 'Holly Cook' showing notices, statistics (80.1% attendance), and activities.

Treat People Kindly . Listen To Each Other . Look After Our School Environment . Do Our Best

WK1 13/04/2026 04/05/2026 01/06/2026 22/06/2026 13/07/2026

WK2 20/04/2026 11/05/2026 08/06/2026 29/06/2026 20/07/2026

WK3 27/04/2026 18/05/2026 15/06/2026 06/07/2026



	Week One	Week Two	Week Three
Monday	Cheese Burger with Jacket Wedges Tuna Pasta Bakes Veg of the Day Fruity Crumble with Custard	Pork Sausage with Gravy & Mash Egg & Vegetable Stir Fry Noodle Veg of The Day Fruity Crumble with Custard	Chicken Burger with Jacket Wedges Vegetarian Bolognese Veg of the Day Fruity Crumble with Custard
Tuesday	Sweet & Sour Chicken with Noodle Vegetable Enchiladas with Steamed Potatoes Veg of the Day Flapjack and Custard	Cottage Pie with Gravy Vegan Sausage Roll with Mash Veg of the day Flapjack and Custard	Bolognese Pasta Baked Vegetable Wrap Veg of the day Flapjack and Custard
Wednesday	Roast of the Day with Gravy & Roast Potatoes Macaroni Cheese Veg of The Day Strawberry Jelly	Roast of the Day with Gravy & Roast Potatoes Macaroni Cheese Veg of the Day Strawberry Jelly	Roast of the Day with Gravy & Roast Potatoes Macaroni Cheese Veg of The Day Strawberry Jelly
Thursday	Chicken Curry with Rice Vegetable Curry with rice Veg of The Day Chocolate Marble Sponge with Custard	Chicken Curry with Rice Vegetable Curry with rice Veg of The Day Jam Sponge with Custard	Chicken Curry with Rice Vegetable Curry with rice Veg of The Day Chocolate Sponge with Custard
Friday	Fish of the day with Chip Spanish Omelette Veg of The Day Banana Sponge with Custard	Fish of the day with Chip Spicy Bean Burger Veg of The day Rice Krispy Cake with Custard	Fish of the day with Chip Cheese & Tomato pizza Veg of The Day Fruity Short Bread with Custard

Freshly Make Sandwiches, Tomato Pasta, Fresh Fruit, Cheese & Crackers and Salad Available Daily





MANOR GREEN SCHOOL

KEY Dates

April to June 2026

Date	Time	Event
Monday 13 April 2026	08:55	Term begins
Friday 17 April 2026	09.30-11.00	Coffee & Chat in school cafe
Tuesday 21 April 2026	Morning 09:30-11:00	Y8 HPV Vaccine Dose 1 Hum Jolly in school cafe
Thursday 30 April 2026	10:30-11:00	School Council meeting
Friday 1 May 2026	09:30-11:30	MGS May Fayre
Monday 4 May 2026	CLOSED	BANK HOLIDAY
Tuesday 5 May 2026	09:30-11:00	Hum Jolly in school cafe
Monday 11 May 2026	Week	GCSE exams start (Maths & English)
Friday 15 May 2026	09:30-11:00	Coffee & Chat in school cafe
Tuesday 19 May 2026	09:30-11:00	Hum Jolly in school cafe
Thursday 21 May 2026	18:00-20:00	Local Governing Board Meeting
Friday 22 May 2026	Morning 15:15	Upper School Talent Show auditions Term ends
Monday 25 May to Friday 29 May 2026		MAY HOLIDAY
Monday 1 June 2026	08:45-16:30	Staff Training Day
Tuesday 2 June 2026	08:55 Month	Term begins for students Pride Month





School Term Dates—Academic Year 2025-2026—School Year 195 days

AUTUMN 2025 Term 1 (38 days)

Staff Training: Wednesday 3 September 2025

Term starts on: Thursday 4 September 2025

Term ends on: Thursday 23 October 2025

Staff Training: Friday, 24 October 2025

October Holiday: Monday 27 October to Friday 31st October 2025

Term 2 (35 days)

Term starts on: Monday 3 November 2025

Term ends on: Friday 19 December 2025

Christmas Holiday: Monday 22 December 2025 to Friday 2 January 2026

SPRING 2026 Term 3 (30 days)

Staff Training: Monday 5 January 2026

Term starts on: Tuesday 6 January 2026 Term ends on: Friday 13 February 2026

February Holiday: Monday 16 February 2026 to Friday 20 February 2026

Term 4 (25 days) Term starts on: Monday 23 February 2026

Term ends on: Friday 27 March 2026 Spring Holiday:

Monday 30 March to Friday, 10 April 2026 (Good Friday – 3 April; Easter Monday – 6 April)

SUMMER 2026 Term 5 (29 days)

Term starts on: Monday 13 April 2026 Bank Holiday Monday 4 May 2026

Term ends on: Friday 22 May 2026

May Holiday: Monday 25 May to Friday 29 May 2026

Term 6 (38 days)

Staff Training : Monday 1 June 2026

Term starts on: Tuesday 2 June 2026

Staff Training: Friday 17 July 2026

Staff Training: Monday 20 July 2026

Transition period for students: Tuesday 21 July to Wednesday 22 July 2026

Term ends on: Wednesday, 22 July 2026

Building for the Future – A Wokingham based, parent led charity providing activities, support and therapy for children with disabilities and/or additional needs and their families. There is a fully accessible play area where they run their stay and play sessions. Click [here](#) for further details.

Jump In – An indoor trampoline park. SEN sessions are for anyone aged 4+ who prefers a quieter session without music and reduced lighting. Jump In can be found in Slough and Camberley. Visit the [website](#) for further details.

Coral Reef Waterworld – One of the largest interactive water worlds in England with a range of waterslides, an erupting volcano, pirate ship and lots more. The Accessible for Everyone sessions are an opportunity exclusively for customers with disabilities their families, carers and friends to enjoy Coral Reef and its iconic waterslides. These run once per month. Please check their [website](#) for further details on dates and to book.

GEMS Hosted by The Autism Group:

Understanding and responding to distressed behaviour in autistic young people' with the aims being; To understand physical responses to anxiety, distress and overwhelm.

To explore what this might look like and think about who is challenging who! To learn some strategies to try to help.

Clip n' Climb – Clip n' Climb Reading offer SEND sessions on a Tuesday. Click [here](#) for more details.

Chance to Dance Stars – A dance school for students and families in the disabled community. Classes run in Bracknell and Reading. Please click [here](#) for further information.

Thames Valley Adventure Playground – Is a charity that offers a unique range of adventurous, therapeutic and educational play activities for both children and adults, mild or profound. Visit their [website](#) for more detail.

For more information click [here](#).

The Autism Group – A Maidenhead based charity committed to supporting and enhancing the lives of young people on the spectrum, their parents and carers. They offer workshops, clubs and parent support services. Click [here](#) to visit their website.

Together, one step at a time. An inclusive SEND community providing sensory safe sessions for families based in Reading, Berkshire. Click [here](#) for more details.

Me2 Club is an inclusion charity for children and young people (aged 5-19 years) with additional needs and disabilities in Wokingham and Reading Boroughs. You can find out more on their website [here](#).

Bracknell Trampoline Centre – They run two SEND classes during term time, for children and adults with special educational needs and disabilities (age 5+) on Saturdays 12.30pm and 1.30pm. Participation is by invitation only




absolutely Together
Putting Smiles on Faces



**1'000s of Smiles Programme
Spring 2026**

We currently have free family tickets available for a range of leisure activities across Berks, Bucks and Herts. To register for this programme, scan the QR code below.



absolutely Together
Putting Smiles on Faces



absolutely Together
Putting Smiles on Faces

SEN FRIENDLY- FAMILY GUIDED BIKE RIDE

Absolutely Together and the Maidenhead Cycle Hub have teamed up to get you on your bikes this half term.

Join us for a free, guided ride on safe paths with a qualified instructor- designed especially for families with children with additional needs.

To register for the ride please scan the QR code below or email us at smiles@absolutely-together.org




APRIL | 9TH | 11AM

MEETING POINT BRAYWICK LEISURE CENTRE CAR PARK,
MAIDENHEAD



Treat People Kindly . Listen To Each Other . Look After Our School Environment . Do Our Best

NEW HOIST!



- New hoist designed to help wheelchair users into our twin-karts
- Book Saturday mornings or inquire about weekday mornings

absolutely Together
Putting Smiles on Faces

Email: smiles@absolutely-together.org
Phone: 0300 303 3548



PARALLEL

absolutely Together
Putting Smiles on Faces



Parallel Windsor

RACE FOR ABSOLUTELY TOGETHER

Sunday 5th July 2026

Windsor Great Park

10k, 5k, 1k, 100m, SuperSensory Race Options

Free entry, minimum sponsorship £50

Help us put more smiles on faces. Scan to register



FACE April 2026 Timetable

All regular sessions delivered live online via zoom. 90 minutes long
£24 each or FREE with School Membership
Book online at facefamilyadvice.co.uk
Recordings available for 48 hours

Understanding Anger	6 April 10am
School Anxiety	6 April 7pm
Facing Defiance	7 April 10am
Supporting Healthy Screen Use	7 April 7pm
Anxiety Explained	13 April 10am
Cannabis and Ketamine Awareness	13 April 7pm
Introduction to OCD	14 April 10am
What is ACT?	14 April 7pm
Decreasing Depression	20 April 10am
Raising Self-Esteem	20 April 7pm
Understanding the Teenage Brain	21 April 10am
Supporting Healthy Sleep	21 April 7pm
FREE Decreasing Depression	23 April 7-8pm
Improving Family Communication	27 April 10am
Autism: Improving Communication	27 April 7pm
Supporting a Child with ADHD	28 April 10am
Understanding Addictive Behaviour	28 April 7pm

