

Headteacher Update

Dear Parents/Carers

I hope that you had a wonderful week so far, this week I would like to share and celebrate with you one of our many wonderful staff members achievements.

[Sara McKay](#) set a challenge to run and complete 12 half marathon once a month for a year and hoping to raise money for various charities. Sara has run in all weathers from cold, frosty starts to beautiful sunny mornings. What an amazing achievement, well done Sara!



If you don't believe in magic, believe in gardening.

Our garden is full of life, and everything is growing beautifully. Alongside our fruits and vegetables, we are growing confidence, skills, friendships, and a love of nature.

I am incredibly proud of our students, whose hard work and dedication make all this possible. Many of the chutneys and pickles sold at our Christmas Market were made from produce grown right here in our garden.

Sometimes a tiny seed really does become something magical.





Manor Green School are supporting SEND Coffee by raising money within the community around the school . Our Carers & Enterprise leader along with our Headteacher attended the SEND Coffee Awards evening, where Sara won the Community Impact Award on behalf of Manor Green School.

SEND Coffee is a CIC owned and operated on behalf of The Foundation for Persons with Disabilities in Coffee.

We operate several award winning coffee shops around London, and use these as a base for our also award winning training module. We also try to make the wider UK coffee industry a more accessible place.

We work with vulnerable young adults with SEND and offer them 1.1 support over 48 weeks, we use that time to deliver an Occupational Therapy Model of training with real shifts inside our award winning coffee shops. We help them acquire Life Skills such as travelling, cooking, balancing a social life, managing Finances and practicing good self care techniques.

Since launching, we have help transform the lives of over 92 young adults, supporting them into greater confidence and independence



Excellence Everywhere

Please see this week's Excellence Everywhere featuring Morpurgo class.

<https://youtu.be/OhLFnTE6haQ>

Fundraising -Thank you

Thank you for your support with our fundraising projects, it means so much to us that you kindly donate to our causes. We understand that it is a big ask to donate to the school, when there are so many other monitory priorities. We couldn't do it without you. We have had a positive start to the Esports fundraising so thank you to those who have donated.



Yours sincerely
Helen Hannam, Headteacher





Treat People Kindly . Listen To Each Other . Look After Our School Environment . Do Our Best

Exciting New Fundraising Project at Manor Green School!

Esports

We are raising funds to purchase the IT equipment needed for this exciting new project, which will provide our students with access to a fun, inclusive, and engaging activity that promotes teamwork, confidence, communication, and digital skills. .

<https://www.crowdfunder.co.uk/p/esports-equipment/donate/20>

The aim of this project is to create an inclusive Esports space where all students can feel confident, connected, and successful.

We have the students, the space, and the vision to bring Esports to our school — now we need your support to make it a reality.

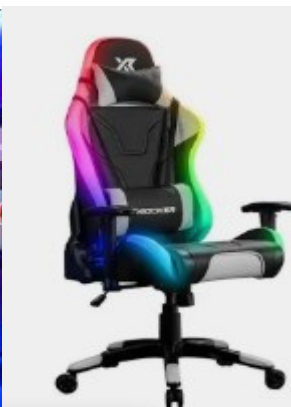
For many of our students, Esports offers a unique opportunity to take part in an activity where they can truly thrive, build friendships, and feel part of a team. This project is not just about gaming — it is about creating opportunities, building confidence, and giving every student a place to belong.

This project can only happen with the support of our wonderful families, friends, and wider community. Every donation, no matter how big or small, will make a real difference and help us create an amazing new opportunity for our students.

We sincerely appreciate all your support and generosity.



Thank you for supporting us and making this vision possible.



Parent/Carer Social Events

Hum Jolly - School Café 09.30 –11.00

Hum Jolly is a social gathering for all parents in our Asian community. We meet every fortnight on Tuesdays in our school café between 09.30 and 11.00.

Please email

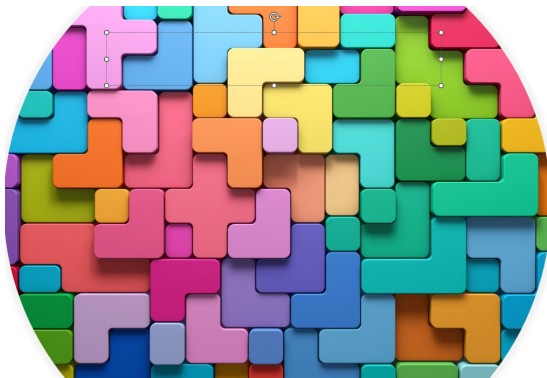
shareen.hussain@manorgreenschool.co.uk

If you would like more information

Tuesday 9 June

Monday 22 June

14 July Joint Hum Jolly and Coffee and Chat



Parent Support Team

If you need help with Microsoft Teams or password resets, etc. please contact our ICT team on:

offsite.tech@manorgreenschool.co.uk

Privacy Notice

The school's privacy notice is available from the [website](#)

Weekly emails

If you do not receive our weekly emails please me know:

Charlotte.deer@manorgreenschool.co.uk They are always available from the [website](#).

Coffee & Chat—School Café 09.30—11.00

Coffee & Chat is a chance for parents and carers to come together over a coffee and perhaps a slice of cake made by our catering staff.

Please email

Nagina.pazir@manorgreenschool.co.uk if you would like more information

Friday 5 June

Friday 19 June

Friday 3 July

Tuesday 14 July

Joint Coffee & Chat and Hum Jolly



Manor Green School Housekeeping

Morning Drop Off

PLEASE NOTE WE WILL NOT ALLOW ANY VEHICLES BRINGING STUDENTS ON THE SCHOOL SITE BEFORE 08:45. ANY VEHICLES ARRIVING EARLY WILL BE TURNED AWAY.

08:45: All school transport and parent/carer vehicles are permitted on site.

Staff will only wait at the front of the school for the delayed students until 09:20. Staff should wait in the reception area to help communication with the receptionist.

Afternoon Pick Up

PLEASE NOTE WE WILL NOT ALLOW ANY VEHICLES COLLECTING MANOR GREEN STUDENTS ON THE SCHOOL SITE BEFORE 14:15. ANY VEHICLES ARRIVING EARLY WILL BE TURNED AWAY unless they have a 14.30 finish.

14.15 All vehicles collecting students from The Link or those from Manor Green School with a 14.30 finish are permitted onsite

14.45 All remaining school transport/carer vehicles are permitted onsite

Staff **must** bring all students to the front of school at **14:50** for collection.

Students will be brought out to vehicles by school staff in the normal way.

Afternoon pick up: escorts should collect the students from the school staff.

Foundation Park

A polite reminder that parents should not be parking at the entrance to Foundation Park when dropping off or picking up children. This is not a drop-off pickup point for the school and we need to respect our neighbours. Thank you for your co-operation.

Contacting Staff at Manor Green School


If you need to contact staff at school please follow school procedure by contacting the class teacher in the first instance with any concerns. This will then passed to the relevant assistant headteacher if it cannot be resolved with the teacher.

Arbor Management Information System App

We use Arbor to communicate with parents.

Please contact Nicola Camano at

data@manorgreenschool.co.uk If you are experiencing problems with logging in



We're using Arbor's free Parent Portal and Arbor App

We've chosen Arbor to help us manage our school.

Arbor is a simple, smart and cloud-based MIS (Management Information System), which helps us work faster, smarter and more collaboratively as a school. The Arbor App and Parent Portal mean we can keep you informed about your child's life at school in a much more accessible way. Log into Arbor to see and update your child's information, get live updates and make payments or bookings on the go!

The Parent Portal works on Google Chrome (computer or laptop) and you can download the Arbor App from the App Store or Google Play Store on your phone (Android 5.0; IOS 10.0 and upwards).

How to get started

1. Wait for your welcome email from us telling you Arbor is ready - you won't be able to log in before
2. Click the link in your welcome email to set up your password
3. Go to the App or Google Play Store on your phone and search 'Arbor'
4. Click "install" on Android or "Get" on iPhone then open the App
5. Enter your email, select the school, then enter your password
6. Accept the Terms & Conditions and enter your child's birthday

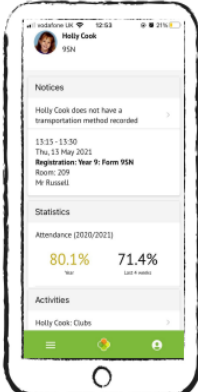
Need help using Arbor?

Contact the school office if you have questions about Arbor, the App or Parent Portal. Tell us the type and model of your phone, e.g. an iPhone SE, and include screenshots or screen recordings.

To safeguard student data in line with General Data Protection Regulations (GDPR), Arbor only works directly with schools.

Some tips to try:

1. Ensure your username is the email address you use for Arbor. Ask us to **check the email address** linked to your account.
2. **Reset your password** from the login page, or ask us to do this.
3. If the login email was sent to you more than 96 hours ago, the **password link will have expired**. Ask us to send it again.
4. Ask the school office to check that your email address has not been used twice - e.g. on another guardian or child's profile.
5. **Enter the birthday** of one of your children to log in.
6. Only relatives who are **Primary Guardians** of a child can access the Arbor App. Ask us to check you can access Arbor.



Treat People Kindly . Listen To Each Other . Look After Our School Environment . Do Our Best

WK1 13/04/2026 04/05/2026 01/06/2026 22/06/2026 13/07/2026

WK2 20/04/2026 11/05/2026 08/06/2026 29/06/2026 20/07/2026

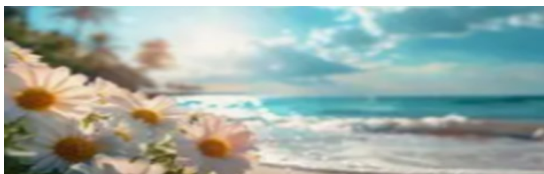
WK3 27/04/2026 18/05/2026 15/06/2026 06/07/2026



	Week One	Week Two	Week Three
Monday	Cheese Burger with Jacket Wedges Tuna Pasta Bakes Veg of the Day Fruity Crumble with Custard	Pork Sausage with Gravy & Mash Egg & Vegetable Stir Fry Noodle Veg of The Day Fruity Crumble with Custard	Chicken Burger with Jacket Wedges Vegetarian Bolognese Veg of the Day Fruity Crumble with Custard
Tuesday	Sweet & Sour Chicken with Noodle Vegetable Enchiladas with Steamed Potatoes Veg of the Day Flapjack and Custard	Cottage Pie with Gravy Vegan Sausage Roll with Mash Veg of the day Flapjack and Custard	Bolognese Pasta Baked Vegetable Wrap Veg of the day Flapjack and Custard
Wednesday	Roast of the Day with Gravy & Roast Potatoes Macaroni Cheese Veg of The Day Strawberry Jelly	Roast of the Day with Gravy & Roast Potatoes Macaroni Cheese Veg of the Day Strawberry Jelly	Roast of the Day with Gravy & Roast Potatoes Macaroni Cheese Veg of The Day Strawberry Jelly
Thursday	Chicken Curry with Rice Vegetable Curry with rice Veg of The Day Chocolate Marble Sponge with Custard	Chicken Curry with Rice Vegetable Curry with rice Veg of The Day Jam Sponge with Custard	Chicken Curry with Rice Vegetable Curry with rice Veg of The Day Chocolate Sponge with Custard
Friday	Fish of the day with Chip Spanish Omelette Veg of The Day Banana Sponge with Custard	Fish of the day with Chip Spicy Bean Burger Veg of The day Rice Krispy Cake with Custard	Fish of the day with Chip Cheese & Tomato pizza Veg of The Day Fruity Short Bread with Custard

Freshly Make Sandwiches, Tomato Pasta, Fresh Fruit, Cheese & Crackers and Salad Available Daily





Wk	Date	Time	Event
	Thursday 4 June 2026	10:30-11:00	School Council meeting Duke Of Edinburgh Expedition – Group 1
	Friday 5 June 2026	Day 09:30-11:00	Fundraising Day Coffee & Chat in school café Duke Of Edinburgh Expedition Group 1
34	Tuesday 9 June 2026	09:30-11:00	Hum Jolly in school cafe
	Friday 12 June 2026	09:45-11:45	Upper School Talent Show
35	Monday 15 June 2026	Week	Learning Disability Week
	Tuesday 16 June 2026		Back Up Date for Duke of Edinburgh
	Wednesday 17 June 2026		Back Up Date for Duke of Edinburgh
	Thursday 18 June 2026		Duke Of Edinburgh Expedition Group 2
	Friday 19 June 2026	09:30-11:00	Duke Of Edinburgh Expedition Group Coffee & Chat
	Thursday 21 June 2026	09:30-11:30	Stay & Play and Coffee Morning
36	Monday 22 June 2026	09:30-11:00	HPV Vaccine Dose 1 catch up session Hum Jolly in school café
	Tuesday 23 June 2026	Morning	First School Sports' Day on Lowbrook field
	Wednesday 24 June 2026	Morning	Middle School Sports' Day on Lowbrook field
	Thursday 25 June 2026	18:30-20:30	Upper School Sports Day on Lowbrook Field Upper School Prom
	Friday 26 June 2026	Morning	Specialist Sports Day on Low brook Field
37			
	Friday 30 June 2026	18.00 -20.00	Local Governing Board Meeting



School Term Dates—Academic Year 2025-2026—School Year 195 days

AUTUMN 2025 Term 1 (38 days)

Staff Training: Wednesday 3 September 2025

Term starts on: Thursday 4 September 2025

Term ends on: Thursday 23 October 2025

Staff Training: Friday, 24 October 2025

October Holiday: Monday 27 October to Friday 31st October 2025

Term 2 (35 days)

Term starts on: Monday 3 November 2025

Term ends on: Friday 19 December 2025

Christmas Holiday: Monday 22 December 2025 to Friday 2 January 2026

SPRING 2026 Term 3 (30 days)

Staff Training: Monday 5 January 2026

Term starts on: Tuesday 6 January 2026 Term ends on: Friday 13 February 2026

February Holiday: Monday 16 February 2026 to Friday 20 February 2026

Term 4 (25 days) Term starts on: Monday 23 February 2026

Term ends on: Friday 27 March 2026 Spring Holiday:

Monday 30 March to Friday, 10 April 2026 (Good Friday – 3 April; Easter Monday – 6 April)

SUMMER 2026 Term 5 (29 days)

Term starts on: Monday 13 April 2026 Bank Holiday Monday 4 May 2026

Term ends on: Friday 22 May 2026

May Holiday: Monday 25 May to Friday 29 May 2026

Term 6 (38 days)

Staff Training : Monday 1 June 2026

Term starts on: Tuesday 2 June 2026

Staff Training: Friday 17 July 2026

Staff Training: Monday 20 July 2026

Transition period for students: Tuesday 21 July to Wednesday 22 July 2026

Term ends on: Wednesday, 22 July 2026

Building for the Future – A Wokingham based, parent led charity providing activities, support and therapy for children with disabilities and/or additional needs and their families. There is a fully accessible play area where they run their stay and play sessions. Click [here](#) for further details.

Jump In – An indoor trampoline park. SEN sessions are for anyone aged 4+ who prefers a quieter session without music and reduced lighting. Jump In can be found in Slough and Camberley. Visit the [website](#) for further details.

Coral Reef Waterworld – One of the largest interactive water worlds in England with a range of waterslides, an erupting volcano, pirate ship and lots more. The Accessible for Everyone sessions are an opportunity exclusively for customers with disabilities their families, carers and friends to enjoy Coral Reef and its iconic waterslides. These run once per month. Please check their [website](#) for further details on dates and to book.

GEMS Hosted by The Autism Group:

Understanding and responding to distressed behaviour in autistic young people' with the aims being; To understand physical responses to anxiety, distress and overwhelm.

To explore what this might look like and think about who is challenging who! To learn some strategies to try to help.

Clip n' Climb – Clip n' Climb Reading offer SEND sessions on a Tuesday. Click [here](#) for more details.

Chance to Dance Stars – A dance school for students and families in the disabled community. Classes run in Bracknell and Reading. Please click [here](#) for further information.

Thames Valley Adventure Playground – Is a charity that offers a unique range of adventurous, therapeutic and educational play activities for both children and adults, mild or profound. Visit their [website](#) for more detail.

For more information click [here](#).

The Autism Group – A Maidenhead based charity committed to supporting and enhancing the lives of young people on the spectrum, their parents and carers. They offer workshops, clubs and parent support services. Click [here](#) to visit their website.

Together, one step at a time. An inclusive SEND community providing sensory safe sessions for families based in Reading, Berkshire. Click [here](#) for more details.

Me2 Club is an inclusion charity for children and young people (aged 5-19 years) with additional needs and disabilities in Wokingham and Reading Boroughs. You can find out more on their website [here](#).

Bracknell Trampoline Centre – They run two SEND classes during term time, for children and adults with special educational needs and disabilities (age 5+) on Saturdays 12.30pm and 1.30pm. Participation is by invitation only



The Croft Clinic

You're not alone.

NEW DIAGNOSIS. NEW CHAPTER.

**A GROUP FOR TEENS
RECENTLY DIAGNOSED WITH AUTISM**

Getting an autism diagnosis can bring up a lot of questions and different emotions.

This group is a safe, supportive space just for you.

A welcoming group to connect as much or as little as you would like with other teens who understand.



PROVIDING SUPPORT

Connect with others who understand. Share, listen, and support each other.



TALK ABOUT IT

Open, judgement-free discussions about diagnosis, feelings, and what it means for you.



POSITIVITY

Focus on strengths, celebrate differences, and build a more positive outlook.



UNDERSTANDING

Learn, ask questions, and gain a deeper understanding of yourself and your brain.



BUILD CONFIDENCE

Improve self-esteem, develop coping strategies, and feel more confident being you.



THIS GROUP IS BEING LED BY **LAURA CHARLETON**, an Occupational Therapist with years of experience in diagnosing young people with autism and supporting them following their diagnosis.

THE DETAILS

- WHEN**
Tuesday 18th August
4-5pm
- WHERE**
Odney Club, Cookham
- WHO**
Teens 13-19 recently diagnosed with autism

TO RESERVE A PLACE

To reserve a place for £25 please contact Laura

✉ laura@therainbowotcompany.co.uk



The Croft Clinic is pleased to support this group as part of our ongoing post-diagnostic support services.



The Croft Clinic

PARENTS/CARERS GROUP

You don't have to do this alone.

For parents and carers of young people recently diagnosed with autism.



INFORMATION

Share and learn from others who understand.



ASK QUESTIONS

A safe space to ask, talk and get answers.



SUPPORT

Connect with others who get it. Share, listen, encourage.



UNDERSTANDING

No judgement. Just understanding, acceptance and shared experiences.



Led by Croft Clinic Occupational Therapist, **Laura Charleton**

who has extensive experience of both **assessing** young people for autism and **supporting** them following diagnosis.



DATE
Thursday
16th July



TIME
6:00pm -
8:00pm



LOCATION
The Odney Club,
Cookham



COST
£25
per place



BOOK YOUR PLACE

Spaces are limited, so we recommend booking early. To reserve your place, please contact: laura@therainbowotcompany.co.uk



The Croft Clinic

The Croft Clinic is pleased to support this group as part of our ongoing post-diagnostic support services.



Treat People Kindly . Listen To Each Other . Look After Our School Environment . Do Our Best

DUCK DERBY

RAY MILL ISLAND - MAIDENHEAD
SUNDAY 14TH JUNE | 12PM - 5PM

FREE ADMISSION
TRAIN RIDES
CRAFT STALLS
CHILDREN'S
ENTERTAINMENT



DUCK RACE
4.30PM - 1ST PRIZE
£250



Maidenhead Lions Club
Charity number: 1193483



Ridgeline Trust Therapeutic Garden

'LET IT GROW'

Summer Holiday Garden Club!

For age 12 - 19 SEN students
with parent/carer

Come and enjoy our beautiful garden
and connect with nature this summer



Wednesday 29th July & Thursday 30th July
Wednesday 5th August & Thursday 6th August
Wednesday 12th August & Thursday 13th August
10.30 am - 12.30pm
£15 per session or just £75 for all 6*!
*if paid in advance

admin@ridgeline.org.uk
for info and to book your place



25 Whiteknights Road,
Reading RG6 7BY
Tel: 07535 636018



This online training session is suitable for both parents and professionals who are supporting children with ADHD. Many of the interventions are also useful with other forms of neurodivergence.

Welcome to FACE online training, accredited by the CPD Standards Office. On successful completion of this training you will receive a recognised CPD certificate that can be added to your training portfolio.

Are you caring for, or working with, a child with ADHD? Parents, teachers, school staff, social workers, family support workers and more, are facing an increase of children being diagnosed as ADHD. Are you looking for more information on this condition? With a multitude of pages of information available online, but no-one to speak to, separating the fact from the fiction, can be a daunting task.

Whether you are a professional or a parent, supporting a child with ADHD is challenging.

This training session will enhance your understanding of the condition and raise your confidence in applying effective support. Specific sections for teachers on behavioural management in the classroom.

This training aims to:

- Define ADHD as a developmental disorder
- Describe the signs and symptoms of ADHD
- Show which areas of the brain are affected
- Introduce a range of supportive interventions for parents
- Introduce a range of supportive interventions for the classroom

By the end of the training you will be able to:

- Identify possible traits of ADHD
- Understand how ADHD impacts on the mind and body
- Apply a range of interventions to support a child with ADHD

Attention Autism at Home



**Online Training for Parents
by a Parent, who is also
an Advanced Practitioner.**

**Delivered by Anna Burke Attention Autism™
Advanced Practitioner
and parent of an autistic son.
and Lyndsay Barlow Co-owner and Director of Attention Autism™**

Venue: Online (Zoom)

Workshop time: 7:30pm – 8.30pm

Workshop dates: Thursdays 4th and 11th June, 2nd July

Cost: £240 for one person. BUY ONE GET ONE FREE!

**Two parents or one parent and a family member can attend
on one ticket. The second has a free place!!**

Klarna payments are available.



If you would like to attend the training, please use

Go to www.attentionautism.co.uk to book. It is going to fill up fast.

In this series of three 1 hour workshops, we will cover all 4 stages of the Attention Autism Programme, discuss the ideas behind it and use real-life examples to show exactly how and why it works.

You and your child will learn how to connect, get focused attention, keep it, share it and use it to develop communication and have some fun with your child. After the training you will:

- Understand the ideas that drive the Attention autism programme
- Get connected so interaction is shared and enjoyable
- Know how to engage your child's attention, keep it and share it
- Build understanding and confidence in getting the message across
- Know how to move forward to spontaneous expression for your child, however that might look for them
- Access individual sessions for your unique child
- Create activities that are worth communicating about and inspire your child to learn
- Create sessions that everyone enjoys and remembers

Each family will also have three 30-minute zoom coaching sessions with Anna Burke (parent) to help them implement the programme in their home.