

WELCOME
ASCENDANCY PARTNERSHIP TRUST
CONSULTATION
'STRONGER AND BETTER TOGETHER'

What is today about?

FORMING AND JOINING A MULTI- ACADEMY TRUST

Genuine consultation – we and the governors want to listen to your views

Shape the future - Your opportunity to have a say and help guide to improve outcomes for pupils and opportunities for staff

Create a SEND Trust anchored in our local community - champion disability

The governors will consider all your views at the end of the consultation period and make a decision as to whether to become an academy



What is today about?



What are we consulting with you on?

- Becoming an **academy** instead of a school maintained by the Local Authority by September 1st 2024

*What is an **Academy**?*

- An academy school in England is a state-funded school which is directly funded by the Department for Education and independent of local authority control.

*• **What are we consulting with you on?***

- Forming and joining a **Multi-Academy Trust** called **Ascendancy Partnership Trust**

*What is a **Multi-Academy Trust (MAT)**?*

- A multi-academy trust is a system where several schools join together under the leadership of a single governing body. These are the Trustees and the members.
- Essentially run like a large Charity or family of schools

+

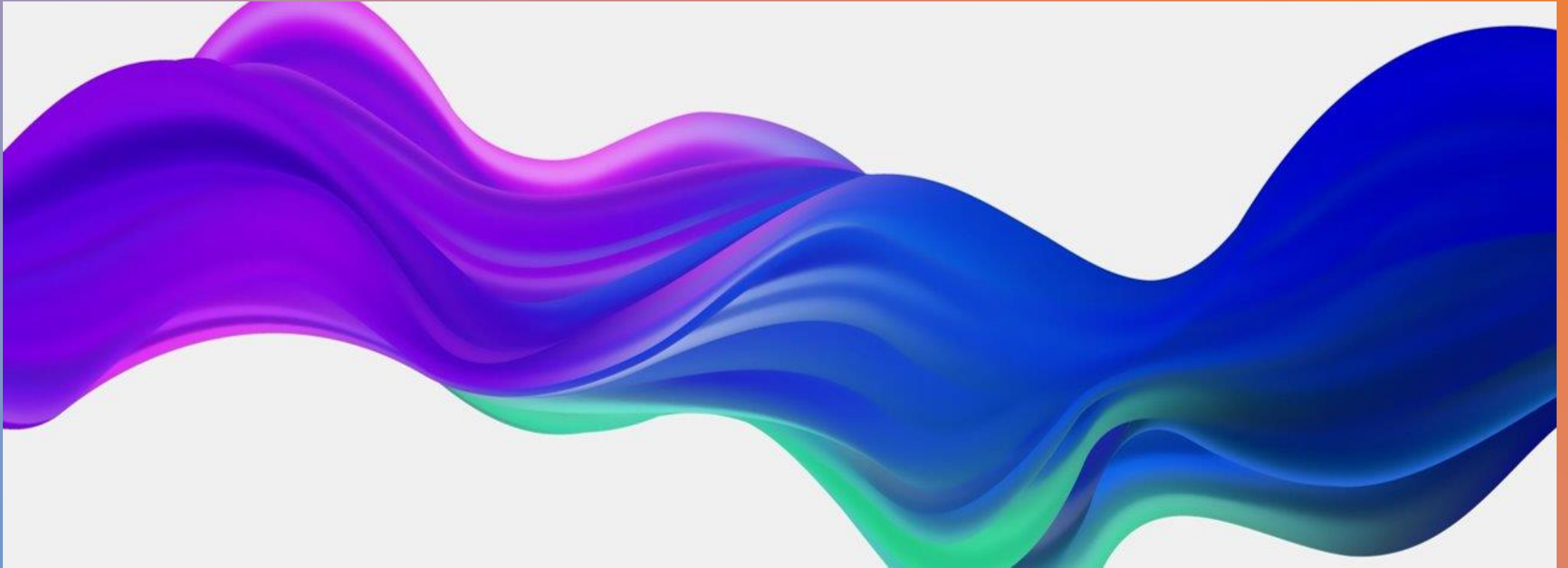
○

By the end
of today we
want you
to ...

●

- Better understand the process
- Better understand the reasons for the change
- Feel more informed of the impact on your child's education
- Ask any questions you may have
- Put names to faces that you may not know yet
- Be reassured that the change is in the best interests of all involved and that true collaboration and better outcomes for pupils with SEND is at its heart





Who is involved?

Family of Schools





Brookfields
Specialist SEN School

+



Addington
School

MANOR GREEN
SCHOOL

Excellence for All

3 Berkshire Special
Schools - Woodley,
Tilehurst, Maidenhead

Current leaders in these
schools have countless
years' experience in the
field of Learning
Difficulties
PMLD/SLD/MLD

Manor Green also has
many years experience in
field of SEMH - The Link

Joolz Scarlett: HT Manor Green

- **Already working in partnership**
 - **Assessment, curriculum, moderation**
 - **Send pedagogy**
 - **ITT and ECT**
 - **CPD**
 - **Peer support**



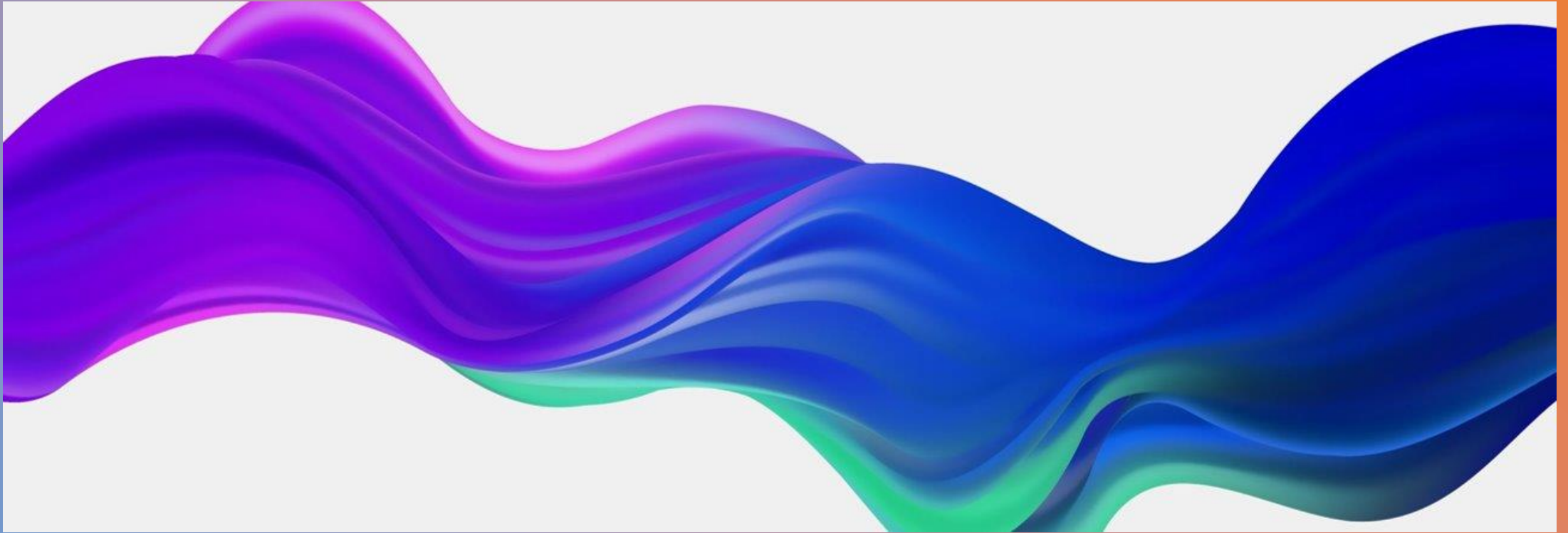
Chair of Trustees



- We had to set up an EMPTY MAT before August 31st 23 to submit Free School Bids. More about this later...
- Very fortunate with the level of expertise in our MAT governance
- Chair of Trustees has been voted in by the Trustees

Mark Trepte: over 20 year's experience as a special school governor

Has a son with special needs



So why are we doing this?





Special Educational Needs & Disabilities

Overarching Aim

To improve outcomes and opportunities for all children and young people with SEND across Berkshire.

We are the experts!



+



Why?

- **First and foremost:** To improve outcomes for pupils with SEND
- **White Paper:** ambition by 2030 for all schools to be in a MAT. Choose our partners whilst still can. Over 50% of schools are now in Trusts
- **Stronger and better together:** same issues, 1 stronger voice. Can be lonely being the only special school in the LA. Already working closely together. More financially sustainable
- **Free Schools:** only Trusts can run Free schools. 3 new Free schools in WBC and RWBM. If we don't run them someone else will – we are the best people to run local special schools for our CYP
- **Lack of therapy for our CYP:** What can we do as a Trust that we can't do as single schools? Run a sustainable therapy Hub

What are our Aims?



- Most important is **Autonomy** - Retain identity and ethos of individual schools.
- To pool our resources and benefit from economies of scale
- To create a Therapy Hub
- To secure financial sustainability for all our schools
- To improve Inclusion and Outreach
- To improve SEND CPD for all our staff

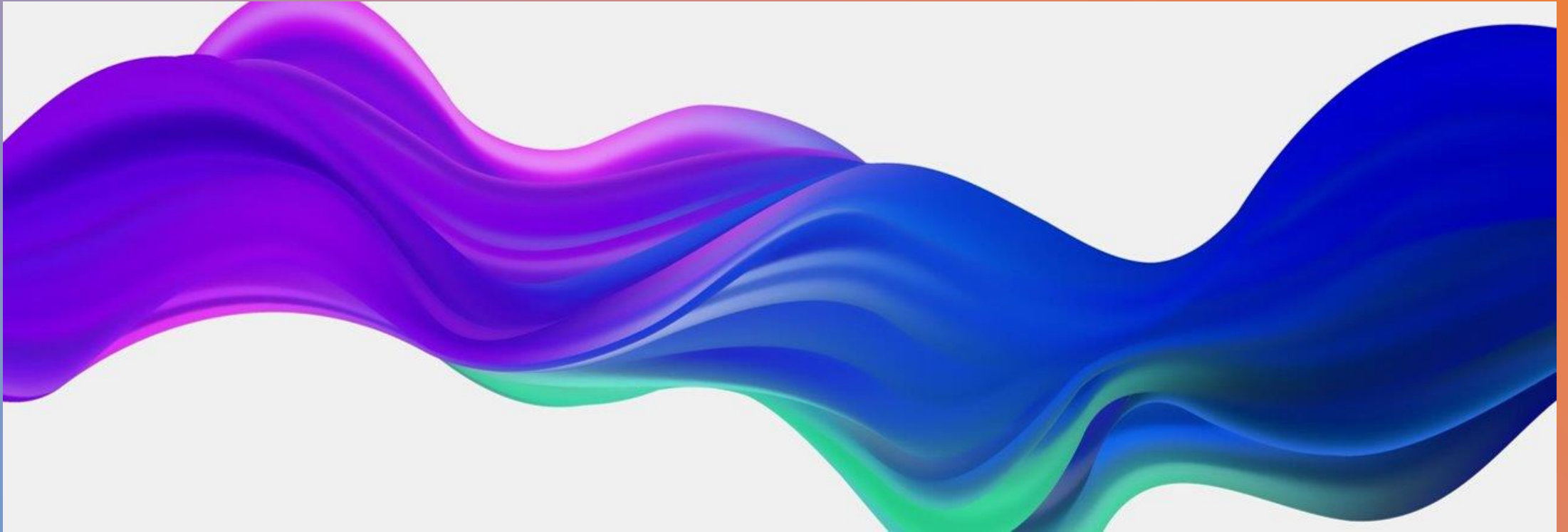




Free Schools

A Free School is a school set up by an organisation or a group of individuals, funded by the government but not controlled by the local authority.

- Strawberry Fields (MSLD) 120 pupils + Rooks Nest (SEMH) 120 pupils - South Wokingham, same site. 4-19yr
- Oakley Green School (SEMH)- Maidenhead. 100 pupils 5-16yr
- Bids needed to be submitted to DfE by 31st August with FULL picture of the MAT, i.e. who is in it, who is running it and how it will work
- All 3 schools contributed to these 3 bids either financially or by giving time.
- Very pleased to secure an interview at the DofE on 13th Dec for all 3 schools. Awaiting outcome...
- To submit the bids, had to set up an 'Empty MAT' with Members, Trustees and an *interim* Executive Team
- Impact on our recruitment of staff if another Trust runs them – fliers in neighbourhood already



So, what will it look like?

Ascendancy Partnership Trust



The Structure of a MAT



Central Team



- **CEO**
- **Chief Finance Officer**
- **Director of Education**
- **Director of HR**
- **Director of Estates and Operations**
- **Payroll and Finance Assistant**
- **PA to Central Team**

ALL these posts will be advertised internally following the outcome of the consultation period

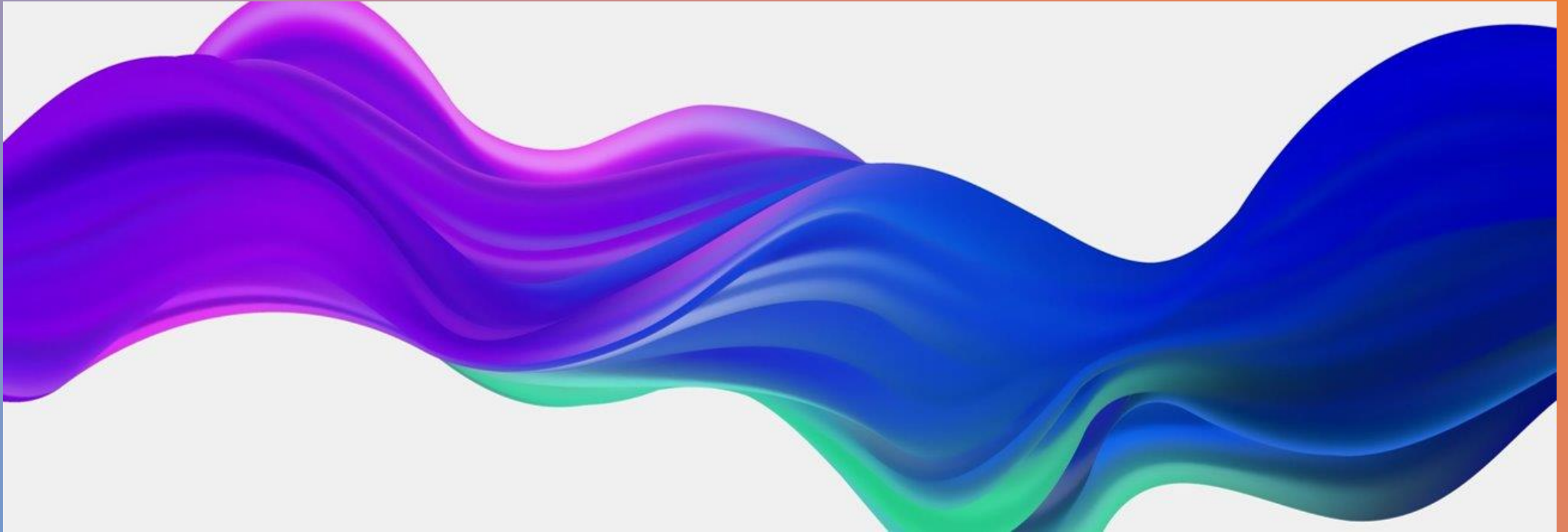
THERAPY



To realise our aims, we will create Central Services

Currently most of our services are bought in from our Local Authority. Nothing is free anymore! Getting more expensive as fewer maintained schools using them.

- **Central School Improvement** - support for SEND pedagogy, curriculum, assessment. All 3 schools re-inventing the wheel in individual schools. Lots of time and money wasted by duplication of making our schools fit government mainstream policies. More focused sharing of expertise
- **Central Finance and Estates Management** - collective voice to negotiate funding and commissioning. We can bid on funding to improve the estates and manage the works ourselves
- **Central Therapies Hub** – build on Manor Green system - employ our own therapists for universal and targeted support.
- **Central Legal** - huge amount of time spent in tribunal and responding to consultations for places. Allow HTs to concentrate on Teaching and Learning



How will it affect you and your child?

Ascendancy Partnership Trust



Better outcomes for all pupils with SEND in Berkshire

- The Trust will champion disability in the local area
- Improved comprehensive Outreach Services
- You will have increased access to Therapy advice
- It will create a stronger voice across Berkshire of the strengths and employability of our young people
- It will create better trained teachers and support staff as they access better CPD opportunities across 3 special schools
- It will create better value resources and equipment for pupils through economies of scale



Your Child's education



- Your child will keep their EHCP
- The school named currently on your child's EHCP will not change
- A Multi-academy Trust cannot be named on an EHCP
- You and your child will notice very little difference, if any, in the day to day running of the school

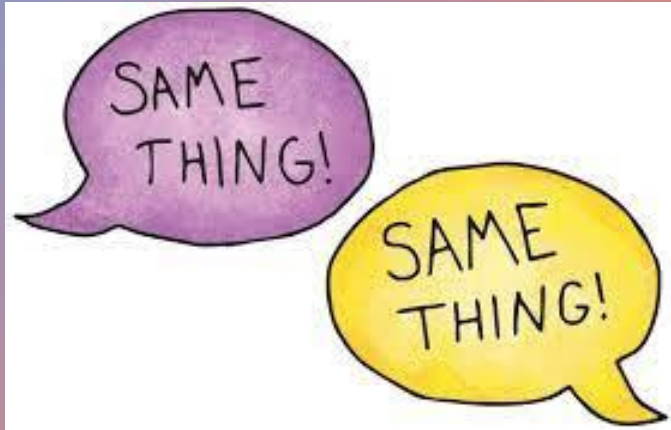
The School Day



+

○

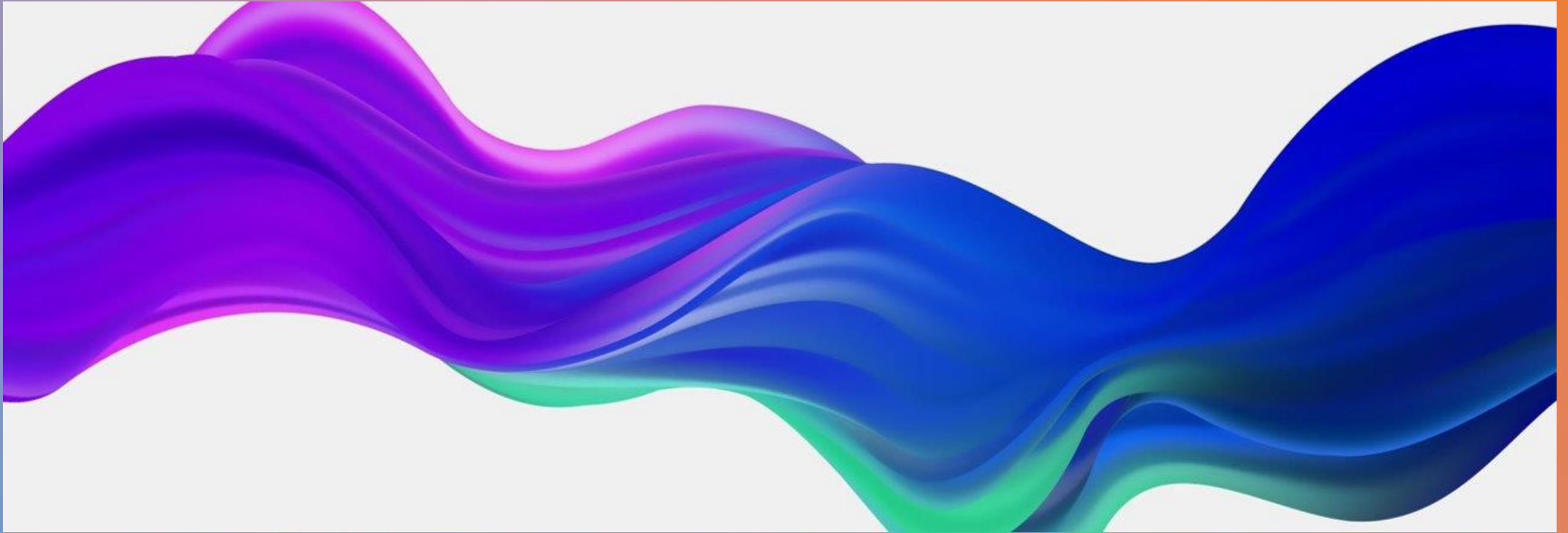
What else will stay the same?



- The School's name
- The uniform
- The school day
- The Governing Board in our school and parent governors
- Any parent Associations
- The amount of support your child receives
- Class sizes

The School Day



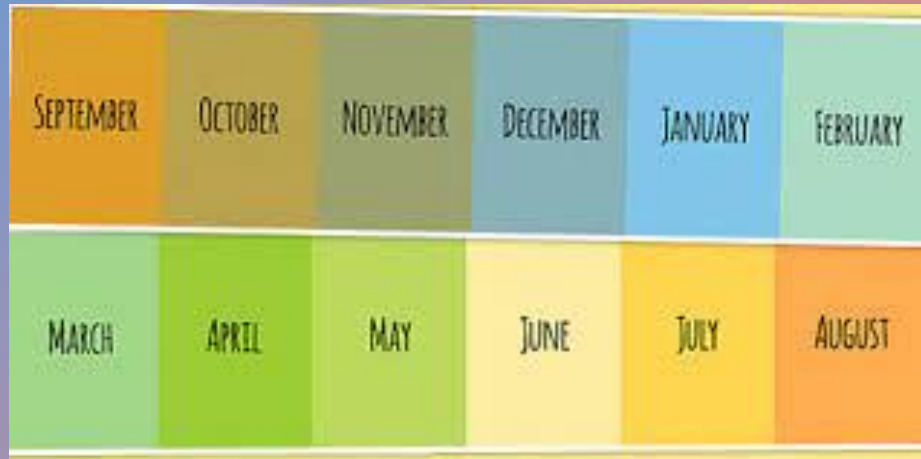


Next Steps?

Ascendancy Partnership Trust



Timeline



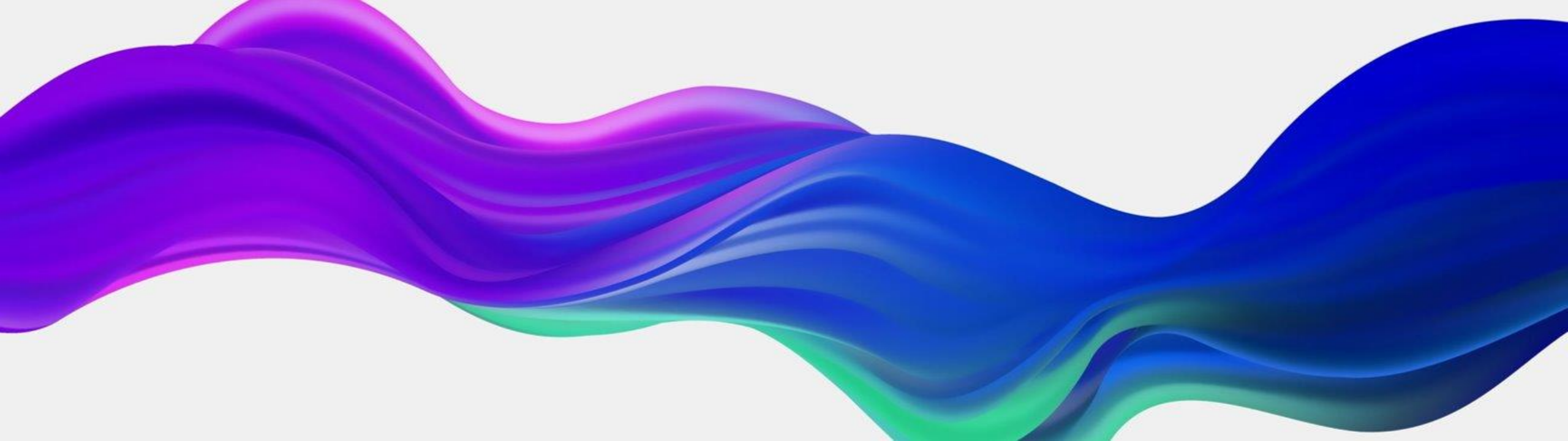
1. Consultation to become an Academy ends on 1st March
2. Governors decide the outcome of the consultation and inform parents
3. If the decision is made to proceed, staff transfer over to the Trust
4. We hope to become an Academy and part of Ascendancy Partnership Trust by 1st September 2024

Next Steps

- Your opportunity to ask us questions
- now or later, Teams Form
- We will send you this presentation
- We will run a virtual Q& A session
- Your parent governors will be available to answer questions
- Governors will consider all your feedback and decide whether to become an academy

Equality MUST be considered throughout. No group will be disadvantaged.





FORMING AND JOINING
ASCENDANCY PARTNERSHIP TRUST
'STRONGER AND BETTER TOGETHER'
ONE BIG FAMILY OF SCHOOLS